

# Change of address



## WICKMAN EXETER Limited



Banner Lane, Coventry CV4 9GE, England

Telephone: (0203) 47 47 55 Telex: 312498 Facsimile: (0203) 464136

We are now located at the main **WICKMAN BENNETT** site in Coventry –  
10 minutes from BIRMINGHAM INTERNATIONAL AIRPORT  
10 minutes from THE NATIONAL EXHIBITION CENTRE  
10 minutes from COVENTRY or BIRMINGHAM INTERNATIONAL RAIL STATIONS  
3 minutes from the main A45 directly linking to M1, M45, M5, M6 and M42.



SEABRIGHT & TRECKER VB4 Vertical Machining Centre – 1982

**STOCKLIST OF USED  
MACHINE TOOLS**  
Conventional and CNC

### CNC SPECIALISTS

Training • Back-up  
Guarantees

**High quality service** and technical back-up, normally enjoyed only by new machine tool buyers, is now available on these top quality secondhand machines.

**Rebuilt** and **reconditioned** machines of all types available but especially – Wickman Multi-spindle Lathes, Wickman Grinders (Internal and Optical Profile), Webster and Bennett Vertical Borers. Buy with the factory 'back-up' service. **Turnkey projects** utilising rebuilt, secondhand and new machines is a speciality. Contact us for the best service and best value.

**Full details of these and other machines currently in stock available on request.**



GILDEMEISTER MD 10S CNC Lathe – 1982



YAMAZAKI Powermatic 4000 CNC Lathe – 1982

**WICKMAN MULTI SPINDLE AUTOS** and **WEBSTER BENNETT VERTICAL TURRET LATHES** – you can now buy these machines secondhand, with factory back-up, from **WICKMAN EXETER** who operate from the same site as the manufacturers. Also factory rebuilt machines available. Send for full details.



TORNOS R10 & M7 SWISS AUTOS



MORI SEIKI TL5 2000mm CNC LATHE



NILES Z STZ800 GEAR GRINDER



BRIDGEPORT 3DA 360° TWIN HEAD COPY MILLS



HEENAN & FROUDE WIRE & STRIP FORMERS



WEBSTER & BENNETT 36EV - 1980



CINCINNATI 500 HYPOWERMATIC - 1970



DAEWOO PUMA 10 CNC LATHE - 1983



YAM CK5 CNC LATHE - 1983



TUDA 14" SPINDLE TWIN CHUCK  
OIL COUNTRY LATHE - UNUSED



WEBSTER & BENNETT 36EM VERTICAL BORER



SUNDERLAND GEAR PLANER 2950mm DIA. -  
SPUR & DOUBLE HELICAL - 1978



**KEARNEY & TRECKER VB4  
MACHINING CENTRE - 1982**



**SUNDSTRAND CNC MACHINING CENTRE**



**SECMU C6 3 AXIS UNIVERSAL BED TYPE MILL**



**FINE BLANKING PRESS - 150 TON**



**DECKEL FP41 CNC TOOLROOM MILL - 1980**



**DECKEL FP4 CNC TOOLROOM MILL - 1980**



**BRIDGEPORT SERIES I CNC TURRET MILL - 1980**



**ELLIOTT STURDIMATIC 400 CNC MILL**



**ELLIOTT MILMATIC 400 UNIVERSAL MILL  
WITH MPS CNC**



**FRORIEP 2.2m VERTICAL BORER WITH 12 STATION ATC**



**UTTITA TV1500/2 CNC VERTICAL BORER  
12 STATION ATC - 1982**



**HERBERT COORDATROL NC TURRET DRILL**

# STOCKLIST

## CNC VERTICAL TURNING CENTRES

**UTITA TV1500/2** 1982 CNC Vertical Borer. With screwcutting, 1,500 chuck, 1,800mm maximum swing, vertical travel 1,200mm, 0-200rpm table speeds, 12-station auto tool changer, swarf conveyor, GE Mark Century 1050T control.

**FRORIEP** CNC Vertical Borer. 2,280mm table, 2,500mm swing, 12-tool autochanger. 1973, but perfect condition. 12 months guarantee. Choice of CNC systems - Fanuc, Siemens or GE.

## CNC MACHINING CENTRES

**KEARNEY & TRECKER** Model VB-4 CNC Vert. Machining Centre. 24 x 68in table, travels X-40in, Y-22in, Z-20in, 15hp motor, 50-4,000rpm, 36-station toolchanger, swarf conveyor, Kearney & Trecker Gemini E. With full CRT. Full range of tooling. 1982. Excellent.

**SUNSTRAND** 4-axis Horizontal Machining Centre. 32in dia. table, pallet shuttle, auto 40-position toolchanger, 25hp d.c. Sunstrand CNC incorporating DEC mini computer. Fantastic machine.

## MANUAL - JIG BORERS - CNC

**SIP** No. 7 Jig Borer. 1,000 x 1,580mm table, 2 axis d.r.o. totally equipped. With spindle tooling and boring heads and SIP rototip table 800mm dia. and SIP tilt/rotary table 450mm dia.

**OERLIKON** KC4 NC. Jig borer table 1,000 x 900 traverses 1,550 x 1,000 x 1,000 superb. 1974 machine. Very well equipped.

**NEWALL** 2443 Jig Borer with d.c. Drives. 1972.

## OIL COUNTRY LATHES

**TUDA** Model Jumbo 14in. Bore Heavy Duty Oil Country Lathe. 700mm swing x 3m between centres, with two 4-jaw chucks, semi automatic threading, 12 speeds 8-360rpm. New and unused.

## CNC LATHES

**CHURCHILL** Computurn 290 CNC Lathe with GE 1050.

**YAMAZAKI** Power Master 4,000 CNC Lathe. 370mm spindle bore, two 700mm dia. 4-jaw chucks, 4,000rpm max. turning length, 8 pos. front and 4 pos. rear toolposts, tallstock, swarf conveyor, steadies, tooling, 30-kW, motor, Fanuc 6TB CNC with CRT. 1982.

**GILDEMEISTER** CNC Lathe, Model MD105. 650mm swing x 2,000mm centres, 115mm spindle bore, 14/2,800rpm, 40kW d.c. drive, 2 automatic steadies for shaftwork, swarf conveyor, full power chucking, 12-station turret with full tooling, full CNC. 1982. Superb.

**MORI SEIKI** TL5A CNC Lathe. 2,000mm between centres, Fanuc 6T, almost unused. Very well equipped.

**WASINO** LG81 CNC Lathe. With milling, pitch drilling and cross drilling, Fanuc 6TB. 1982.

**YAM** CK5 CNC Lathe, 305mm chuck, 1,000mm between centres, 12-station turret with tooling, Fanuc 6TB with CRT display, swarf conveyor, 1983 machine. Superb.

**HARDINGE** 'Super Precision' CNC Bar and Chucking Lathe, Allen Bradley CNC with CRT display.

**MAZAK** 3L Universal CNC Lathe. 800mm swing, 560mm b.c., 300mm chuck, Fanuc 6T. 1979. Very reliable, very reasonable.

## CNC MILLING MACHINES

**BRIDGEPORT** Series 1 CNC Turret Mill. 1990.

**MILLMATIC** 400 Heavy Duty Universal Milling Machine. 1,600 x 400 table, 30-1,580rpm spindle speeds, with Butler MPS CNC control.

**DECKEL** FP41 CNC Universal Milling and Boring Machine. CNC 3301, 3 axis. 1980. With universal head, table 1,400 x 580mm.

**DECKEL** FP4 CNC Universal Milling and Boring Machine. CNC 3301.

**BERTHIEZ** 10 9320/2. 1,000mm table, r/f bridge.

## BORERS - HORIZONTAL

**TOS** W100A Horizontal Borer. Wide bed. 1975.

**TOS** W100 (1965).

**TOS** H80A (1964).

**GIDDINGS & LEWIS** 70AD PST 5in Spindle Horizontal Borer. 96in x 48in table, air lift, rotary table 60in x 48in. 1967.

## WEBSTER BENNETT BORERS -

A range of secondhand machines available from the company who made them!

Model 36in EV (elevating rail). Full coolant. 1980, as new, with 6 months' full warranty.

Webster Bennett 48 EM. 1971. Full coolant.

Webster Bennett 48 EV. 1978. Full coolant, d.r.o.

Model 60in M. 1973, with 6 months' warranty. Has 3-jaw chuck.

Model 60 DH. Older machine.

Model 36in. EM elevating rail, 7.5-167rpm.

Other machines soon available. Factory spares back up for all these machines. Send for list.

## AUTOMATICS - MULTISPINDLE - SINGLE SPINDLE

### TORNOS AUTOMATICS - R10 & M7

A large range of machines - very fully equipped - available due to plant closure. 3-spindle threading, pickup and slotting available on most machines. Lots of spares.

**HERBERT** BSA 8-spindle, 6in chuck, double indexing. 1971.

**BROWN & SHARPE** Model 2B. 1½ in. twin vertical slide. 1966.

**WICKMAN MULTIS** - buy with total confidence from the company who made them!

1½ x 6 - Universal threading, recessing and full tooling.

1½ x 6 - Several machines, including two which are almost new following part closure of auto shop. Fully equipped and mostly with full threading.

Available shortly due to a major purchase: 36 very good machines, mainly 1in and 1½ in but some chuckers also.

## DRILLING MACHINES

**ARCHDALE** 10ft Radial. Preselector. 17hp spindle.

**HERBERT** Coordatrol NC Turret Drill.

## GEARCUTTING AND GEAR GRINDING MACHINES

**MAAG** SH78 30in Precision Gear Generator.

**CHURCHILL** Broach Grinder.

**SUNDERLAND** G250 DHS Gear Planer. Double cutting straight and double helical, 2,950mm dia. x 510mm face. 1978.

**NILES** 800 Gear Grinder, c/w full equipment. 1964.

**NILES** 500 Gear Grinder, c/w full equipment. 1967.

**PFAUTER** Model P900. 36in dia x 2½ in DP. Superb.

**CHURCHILL** Rigid Hobbers 815-RH8. Hydraulic hob heads.

**SYKES** 1A Gear Hobber. 12in cap.

**SYKES** 1B Gear Hobber. 17in cap.

**LEES BRADNER** 7HD Rigid Hobber. Superb 1970.

**FROMAG** 550/75 Keyseater. Max. kvw. width 75mm, max. stk. 550mm.

**GLEASON** 107 Hypoid Cutter Sharpener.

## GRINDING MACHINES

**WICKMAN** Cadet 1in. Centreless. 1970/73.

**HOMMEL** OPSM-P Optical Profile Grinder, c/w Visomat and circ. att. 1968.

## MILLING MACHINES

**BRIDGEPORT** Model BR2J Two Head Auto Copy. With true trace 360/3D control 50-3,750rpm.

**VERNIER** FV3TO Universal Mill. In superb condition.

**KEARNEY & TRECKER** Model 307-12 Horizontal Milling Machine.

**KOLLMAN** MC563 Double Column Plano Mill. 67in x 67in x 168in cap., 3 swivel heads each 44kW, right angle attach. 1968, recon'd. 1979. Excellent.

**CINCINNATI** 500 Hypoformatic Mill. 26in x 144in table. 1970.

**TOS** FN20 (Deckel Copy) Universal Mill. With optics.

**ACME** AIKARTU FH4 Autocycle Horizontal Mill. Hyd. copying. 1979.

**BROWN & SHARPE** 310 Dynamaster Universal. 1,535 x 330mm. 50/2,000rpm.

**FRITZ WERNER** FH4D heavy Duty Horizontal. High speed. 1967.

**PARKSON** Universal AdaptaMill. Horizontal and Vertical. 1970.

## LATHES

**DEAN SMITH & GRACE** Toolroom Lathes:

a - 17 x 48in with taper turn and full equipment.

b - 25 x 108in with full equipment.

c - 24in Surfacing and Boring.

d - 21 x 48in with copy attachment. Perfect.

**COLCHESTER** Mascot Gap Bed Lathe. 1968.

**COLCHESTER** Mascot 1600 Gap Bed. 1970.

**V.D.F.** 25 x 60in Toolroom Lathe. Plus copy. 1968/79.

**WOODHOUSE MITCHELL** 17 x 60in. Full equipment.

**HERBERT** No. 7 Preop. Comb. Turret Lathe. With power b.f., tooling. 1973.

**LANG** 25 x 108in, 20hp. 1971.

## VARIOUS

**BUTLER** 12ft x 5ft. Openside Planer. Superb.

**BUTLER** 8in Slotter. Toolroom tilt head model.

**FINE** Blanking Presses. Choice. 150 and 250 ton machines.

**DO ALL** Model HC35A Auto. Horiz. Bandsaw 14in cap., auto feed model. Superb.

**WATERBURY FARRELL** Cold Header Model 0.

**RHODES** 8ft x ¼ Guillotine. 1974.

**WALDRICH COBURG** Openside Planer. Hydraulic. 12ft x 5ft. 1960.

**HEENAN & FROUDE** WS1½ Wire & Strip Formers.

**FERRANTI** Inspection Machine. 3 axis.

A unique company with the experience and back-up to be able to bring new machine standards to the used CNC machine market. Buy with total confidence from WICKMAN EXETER.

Programming - Tooling - Operator Training - Commissioning - Guaranteed Back-up -  
Used CNC Machines of the highest quality.



WASINO LG81 CNC LATHE & MILLING - 1982



HARDINGE CNC PRECISION LATHE & BARFEED



MAZAK 3L UNIVERSAL CNC LATHE - 1979



# WICKMAN EXETER Limited



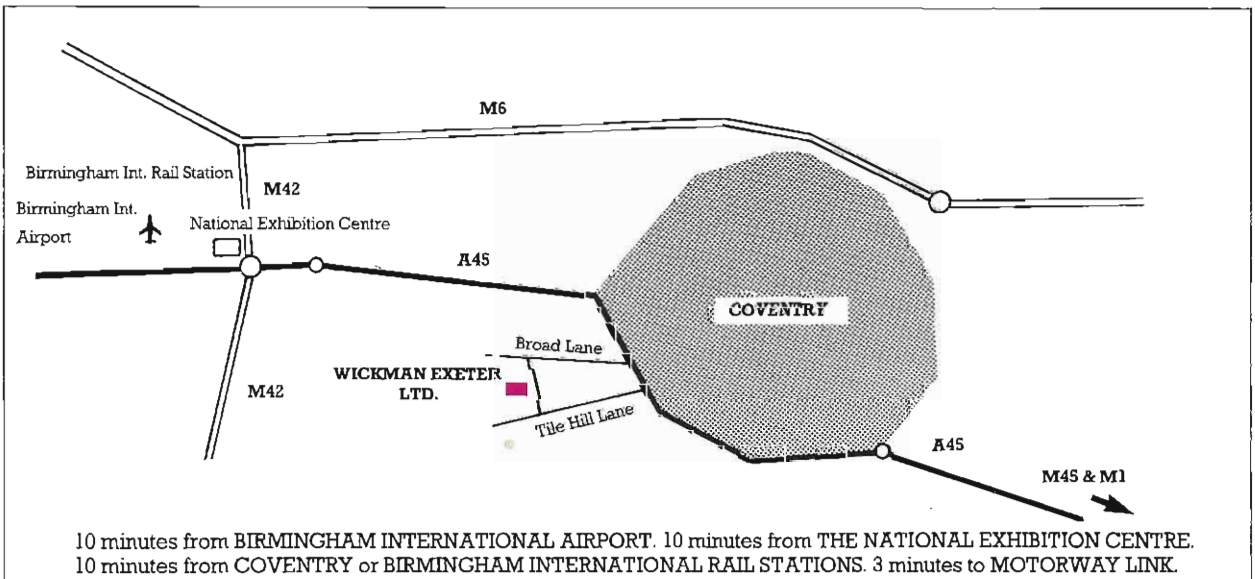
The USED MACHINE TOOL AFFILIATE of WICKMAN BENNETT manufacturers of the internationally renowned Wickman Multispindle Automatics, Wickman Optical Profile Grinders and WEBSTER BENNETT Vertical Turret Lathes.



## THE MACHINE TOOL CENTRE

Convenient and beautiful location right in the Heart of England. Come here for the best quality and best service.

OFFER US YOUR SURPLUS MACHINES – single items or complete factories.  
Contact Iain Exeter on 0203 474755.



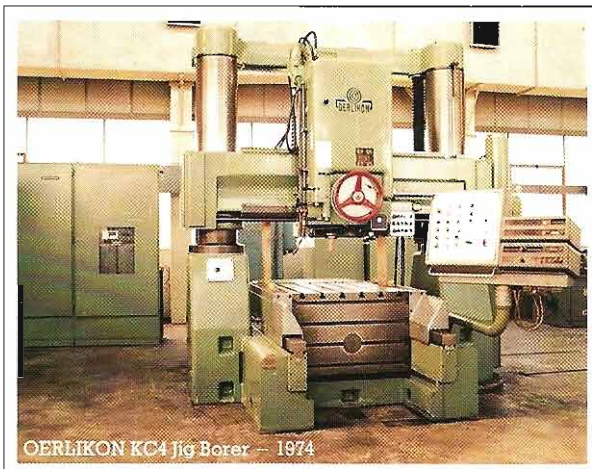
# WICKMAN EXETER Limited

Banner Lane, Coventry CV4 9GE, England

Telephone: (0203) 47 47 55 Telex: 312498 Facsimile: (0203) 464136



a KETLON Group Company



### AIRFRAME MILLING MACHINE - 4 axis

#### MARWIN MAX-E-TRACE 200 series - 65MTT3

X axis (bridge longitudinal traverse)	-	6191mm
Y axis (cross traverse of heads on bridge)	-	2977mm
Z axis (downfeed of heads)	-	457mm
A axis (swivel of heads)	-	+/- 15 deg
2-30 hp heads for aluminium - speeds 750/9000 rpm		
2-30 hp heads for steel - speeds 20/2000 rpm		

#### BENDIX 1500 4 axis NC

A fantastic machine in superb condition.  
Approx. weight - 90,000 kgs.



## COMPLETE PRODUCTION FACILITY

- Ready now to produce  
2,000,000 drills per annum

Capacity from 3mm diameter to 13mm diameter - but please note we are offering tooling to four sizes only within this package. This covers 3, 4, 5 and 6mm diameter drills.

The drills are to DIN 332 - blue, highspeed steel, straight shank. 2,000,000 produced in 2 x 48 hour shifts over 48 weeks during year.

Requires following staff:- 1 Supervision; 2 Skilled; 6 Unskilled.

Factory space is approximately 25m x 16m.

**THIS MACHINERY IS STILL IN ORIGINAL PACKINGS AND IS THEREFORE NEW BUT IS OFFERED AT A FRACTION OF NEW COST!**

#### Machinery comprises of:-

- 3 - SMART & BROWN Automatic Bar Feed Cut Off Machines.
- 2 - SMART & BROWN Type SF500 Automatic Superforge Drill Production Machines: Range 3-13mm; output from 300 to 600 pieces/hr/machine.
- 4 - CINCINNATI No. 2 OM Centreless Grinding Machines - grinding wheel 20" dia. x 8" face; complete with through feed grinding attachment, auto feed unit.
- 2 - SMART & BROWN Model ADCG 500 MkII Hopper Feed Auto Drill Cut Off and Coning Machine.

HEAT TREATMENT & FINISHING - Degreasing, Hardening, Tempering, Shotblasting, Hardness Testing and Oil Blueing Equipment.

DORMER Model 137 MkII Fully Automatic Hopper Feed Drillpoint Grinding Machine: Capacity from 3-13mm dia; output from 500 to 1000 pieces/hr.

PRYOR Pryormark Type 53 Automatic Hopper Feed Marking Machine: Capacity from 2 - 13.5mm output from 5000 to 10000/yr.

THAMES Case Model 33 MkIII Trans Seal Shrink Wrap Packaging System: Pallet size 31½" x 24½" x 12" high.

## TURNKEY PROJECTS

WICKMAN EXETER and other KETLON Group Companies have the facility to provide Turnkey Projects utilising new or rebuilt equipment for maximum cost effectiveness. Examples are available upon request.

From time to time we also have the opportunity to offer ready built projects such as the DRILL MANUFACTURING PLANT shown here.

We are interested to buy any secondhand or unused plant which may be of interest to our customers worldwide. This can be sold to us, sold by us for you or we can market it on a joint venture basis.

**URGENTLY REQUIRED** - Manufacturing Plants for all types of products.



# WICKMAN EXETER LIMITED

Telephone: 021-384 7000

780 Kingsbury Road, Birmingham B24 9PS

Telex: 337682 Telefax: 021-350 6164

## USED CNC/NC MACHINE TOOL STOCK & PRICE LIST

### Vertical Turning Centres

**MAZAK VT16** CNC Vertical Borer, 1600mm dia. cap., 1000mm height, 2-230 rpm with Mazatrol T1 CNC with graphic display. 1985. 'As new.' **£110,000**

**UTITA TV1500/2**, 1982 CNC Vertical Borer with screw cutting, 1500mm chuck, 1800mm maximum swing, vertical travel 1200mm, 0-200 rpm table speeds, 12 station auto tool changer, swarf conveyor, GE Mark Century 1050T CNC control. **P.O.A.**

**FRORIEP** CNC Vertical Borer, 2280mm table, 2500mm swing, 12-tool autochanger, 1973, but perfect condition. 12 months guarantee. Choice CNC systems - Fanuc, Siemens or GE. **£175,000**

### Machining Centres

**MAZAK VQC 20/40B** Ultra high precision vertical machining centre - double column. Table 1240 x 550mm, vertical capacity 1000mm, 40 ISO spindle, 30 tool ATC, full tooling, Mazatrol M1 CNC with graphic display. 1985. 'As new.' **£59,000**

**SUNSTRAND** 4-axis Horizontal Machining Centre. 32in dia. table, pallet shuttle, auto 40 position toolchanger, 25 h.p.d.c. Sunstrand CNC incorporating DEC mini computer. Fantastic machine. **£140,000**

**TOSHIBA SHIBAURA** Model BMC 8B Horizontal CNC Twin Pallet Machining Centre. 4 axis, table 800 x 800mm. Traverses: Y - 1000 x 800mm, Z - 800mm, with Tosnuc Model 300 CNC system, table rotation continuous B axis, 30-position toolchanger, full range of toolholders. 1980. Excellent. **£110,000**

**MAHO MC 500** Horizontal Machining Centre. 580mm diameter indexing table. Phillips 6600 CNC, 24-Station auto toolchanger. 1981. Excellent condition. **£47,500**

**CINCINNATI** 10 VC1000 Vertical Machining Centre with Accramatic CNC control, table 44in x 20in. Traverses: X - 40in, Y - 20in, Z - 25in. 30-station auto toolchanger. 1979. Excellent condition. **£55,000**

### Lathes

**MAZAK QT20** Universal CNC Lathe 300-510 dia. x 1000mm, 18.7kW, a.c., 13-3000 rpm, full equipment, swarf conveyor, Mazatrol T1 CNC with graphics. Absolutely beautiful 1985 machine. **£45,000**

**MAZAK QT10** Universal CNC Lathe with bar feed and 3 jaw chuck Fanuc 6TB CNC **£38,500**

**MAZAK QT10** CNC Lathe Mazatrol T1 CNC with graphics. **£35,000**

**IKEGAI AX20N** CNC Lathe, Fanuc 6TB 1982. As new. 200 hours only. 8in chuck, 12 position turret. **£40,000**

**MORI SEIKI TL5A** CNC Lathe, 2000mm between centres, Fanuc 6T, almost unused. Very well equipped. **£48,500**

**WASINO LG81** CNC Lathe, with milling, pitch drilling and cross drilling, Fanuc 6TB 1982. **£35,000**

**TAKISAWA TX2** with Fanuc 6TB full specification CNC with CRT display, 10½in dia. x 24in turning length. 1983. As new. **£36,500**

**YAM CK2** CNC Lathe. Fanuc 6TB with CRT display, 270mm dia. x 400mm. 1980. **£26,000**

**HARDINGE** 'Super Precision' CNC Bar and Chucking Lathe. Allen Bradley CNC with CRT display. **£41,500**

**MAZAK 3L** Universal CNC Lathe, 500mm swing, 560mm b.c., 300mm chuck, Fanuc 5T, 1979. Very reliable, very reasonable. **£19,500**

### Milling

**BUTLER** Elgamill DR12 VA CNC Bed Type Mill. Bed 8900mm x 1500mm, traverses: 6300 x 1500 x 762mm, Cincinnati CNC-1979. Excellent. **£79,000**

**BRIDGEPORT** Series 1 CNC Turret Mill. 1980. Several of these very popular machines. Each **£9,950**

**MILLMATIC 400** Heavy Duty Universal Milling Machine 1600 x 400 table, 30-1560 rpm spindle speeds, with Butler MPS CNC Control. **£25,000**