



By Order of Wickman Machine Tool Manufacturing Company Limited due to the Sub-Contracting of Machining Operations in their on-going Business

MAJOR TWO DAY SALE BY AUCTION

WEDNESDAY 30TH SEPTEMBER & THURSDAY 1ST OCTOBER, 1992 AT TEN A.M. EACH DAY

AN EXCEPTIONAL RANGE OF SUPERB, LATE, HIGH QUALITY CNC MACHINING & TURNING CENTRES, TOOLROOM & PRODUCTION MACHINE TOOLS, INSPECTION & FACTORY EQUIPMENT

BANNER LANE, COVENTRY, ENGLAND

ON VIEW: MONDAY 28TH AND TUESDAY 29TH SEPTEMBER, 1992, AND THROUGHOUT SALE DAYS

HENRY BUTCHER
INTERNATIONAL AUCTIONEERS
VALUERS SURVEYORS
AND AGENTS

CNC MACHINING & TURNING CENTRES

BORERS, MILLS, GRINDERS & LATHES

DRILLING, INSPECTION & GENERAL EQUIPMENT



Henry Butcher & Co
Brownlow House
50/51 High Holborn
LONDON WC1V 6EG

Wickman Bennett
Machine Tool Company Limited
Banner Lane
Coventry CV4 9GE England
Telephone 0203 465231
Telex 311941 WICBEN

30 July 1992

Dear Sirs

During the past 3 years Wickman has invested very heavily in plant and machinery, value engineering studies and the reprogramming of production methods utilising the new jigs and fixtures. As a result, the manufacturing of component parts and the building of machines has proceeded with much increased efficiency.

A major part of Wickman's sales are achieved overseas and overseas exhibitions are attended. In 1991 we were encouraged and sponsored by the DTI to attend a number of exhibitions, despite the current recessionary period. At one such exhibition we obtained a very large number of strong enquiries and we have spent a great deal of time and money trying to convert these enquiries into orders. We succeeded initially, but the business has stalled as we are unable to obtain export licences from the very Department that encouraged us to go for this market in the first place. Such is the magnitude of this business that the company would have been able to maintain its current operating level for several years, even with very little business coming from its traditional markets.

The effect of this on our short and medium term business plan is severe. Unlike our main competitors from Germany and Switzerland, we have to operate within a banking system which has a very unsupportive attitude towards the machine tool industry. Although we will appeal and fight strongly to obtain these licences, we must meanwhile run the company at a level which we can sustain from our own resources and from other business we can obtain during this recessionary period. We are experiencing great frustration, as this means undoing many of the good things achieved during the past 2 years. We will follow this pattern until the recession is over:-

- 1 We will sell from our stocks of finished machines.
- 2 We will build more machines from our stocks of component parts, but at a reduced rate of build.
- 3 We will cease manufacturing component parts 'in house' because of the reduced rate of machine build. In the future we will sub-contract the manufacture of component parts.

The above steps are taken to ensure that Wickman has the resources and lower operating costs to enable it to retain its core activities of DESIGN, DEVELOPMENT, ASSEMBLY, CUSTOMER COMPONENT PROVING, SPARE PARTS AND TECHNICAL SERVICE and, most important of all, to continue the marketing of the new MULTIFLEX and MULTIFLEX CNC models, recognised as embodying the best and most practical application of new technology to the multi-spindle automatic.

As a result of the above, I am asking you to alter the sale arrangements which were already in place to clear equipment designated as surplus to our current operating plan. Will you now please include the total manufacturing plant and, as our moves are essentially cost cutting, please retain the original September sales dates.

I would appreciate you publishing this letter in your sale brochure so that our customers know what is happening and are not influenced by malicious rumours which can surround circumstances such as these. Furthermore, we would like buyers of the machines to contact us if they are interested to manufacture components for us in the future. Our jigs, fixtures, special tooling and programmes are, of course, all proven on these machines. Anyone so interested should contact Dick Bagley or Tony Monaghan at the factory.

Yours faithfully,

Iain Exeter

Managing Director

Wickman Automatic Lathes, Wickman-TS, CNC Lathes,
Wickman Optical Profile Grinding Machines (O.P.G.'s), Wabater & Bennett, Vertical Turning Machines.
Registered Office: Banner Lane, Coventry CV4 9GE. Registered in England, No. 1818605

Important Notice

Although information has been obtained from sources deemed reliable, Henry Butcher & Co make no warranty or guarantee, expressed or implied, as to the accuracy of the information herein contained.

Overseas Purchasers

Guidance notes will be given in the catalogue, but overseas purchasers should satisfy themselves that they are able to comply with all import/export regulations. Special arrangements for payment, bills of lading etc., should be made through the auctioneers' office.

Clearance

Commences Friday 2nd October 1992. All Lots to be cleared from the premises, without fail, by Friday 23rd October 1992.

CONTENTS

CNC MACHINING & TURNING CENTRES

CNC HORIZONTAL MACHINING CENTRES	4
CNC TURNING CENTRES AND LATHES	6
CNC VERTICAL MACHINING CENTRES	8

BORERS, MILLS, GRINDERS & LATHES

VERTICAL, HORIZONTAL BORING & TURNING MILLS & JIG BORERS	9
CNC CYLINDRICAL AND CENTRELESS GRINDERS	10
SLIDEWAY, SURFACE, ROTARY TABLE, DRILLPOINT & THREAD GRINDERS	11
SS & SC TURRET & CAPSTAN LATHES	13
MILLING & PLANING MACHINES	14

DRILLING, INSPECTION & GENERAL EQUIPMENT

GEAR MACHINERY	15	ENGINEERS LOOSE TOOLS & EQUIPMENT	17
DRILLING MACHINES	15	TRAVELLING & JIB CRANES	17
SAWS AND SLOTTERS	16	INTERNAL TRANSPORT	18
MISCELLANEOUS	16	COMPRESSORS	18
INSPECTION EQUIPMENT	17	OFFICE FURNITURE & EQUIPMENT	18

DIRECTIONS AND ACCOMMODATION

19

Catalogue request line:

+44 (0)71-405 5501

Fax: +44 (0)71-405 9772

 **HENRY BUTCHER**

INTERNATIONAL AUCTIONEERS VALUERS
SURVEYORS AND ESTATE AGENTS

CNC MACHINING & TURNING CENTRES

BORERS, MILLS, GRINDERS & LATHES

DRILLING, INSPECTION & GENERAL EQUIPMENT

CNC HORIZONTAL MACHINING CENTRES

Makino 'MC1210' Twin Pallet Horizontal Machining Centre with 800 x 800mm Pallet Size and 60 Station Toolchanger, 1200mm X-Axis x 1000mm Y-Axis x 800mm Z-Axis, 360° x 1° Index Table. Optical Renishaw Probe, Broken Tool Sensor and Fanuc '6MB' CNC Control, Serial No. A61- 83 (1985)

Shibaura Toshiba 'BMC50E' Twin Pallet Horizontal Machining Centre with 60 Station Toolchanger, 500 x 500mm Pallet Size, Spindle Speeds 25-5000 rpm, 710mm X-Axis x 600mm Y-Axis x 600mm Z-Axis, 1° Indexing Table, Automatic Pallet Changer, Swarf Conveyor & Tosnuc '800M' CNC Control (2 off) Serial No. 212150 (Installed Aug. 91) Serial No. 212089 (Installed Apr. 91)

OKK 'MCH-700' Horizontal Machining Centre with 30 Station Toolchanger, 4th Axis Table, 59" X-Axis x 31½" Y-Axis x 31½" Z-Axis, Built in Rotary Table, Infinitely Variable Spindle Speeds 30-3000 rpm with Fanuc '6MB' CNC Control. Serial No. 199 (Installed 1986)

Takisawa 'H450' Twin Pallet Horizontal Machining Centre with 60 Station Toolchanger, 450 x 450mm Pallet Size, 600mm X-Axis x 550mm Y-Axis x 500mm Z-Axis, Automatic 360° x 5° Index Table, Swarf Conveyor, 32-6300 rpm Spindle Speeds, Fanuc '6M' CNC Control with Tool Life Monitor Serial No. TMHN 3005 (1985)



Makino 'MC1210' Twin Pallet Horizontal Machining Centre, with 800 x 800mm Pallet size and Fanuc '6MB' CNC Control



Heckler & Koch 'Duo Mill 200' CNC Twin Spindle Horizontal Machining Centre with Heckler & Koch 'CNC 785-M' Control



OKK 'MCH 700' CNC Horizontal Machining Centre with Fanuc '6MB' CNC Control



Takisawa 'H450' CNC Twin Pallet Horizontal Machining Centre with Fanuc '6M' CNC Control



Shibaura Toshiba 'BMC 50E' CNC Twin Pallet Horizontal Machining Centre with Tosnuc '800 M' CNC Control



White Sundstrand 'Series 20 Omnimil' Twin Pallet Horizontal Machining Centre with Sundstrand CNC Control

Heckler & Koch 'Duo Mill 200' CNC Horizontal Twin Spindle Machining Centre with 2 x 24 Station Tool Magazine,

600mm X-Axis x 200mm Y-Axis x 400mm Z-Axis with Two 320mm dia Planetary Rotary Tables and Two Workholding Towers, 60-6000 rpm Infinitely variable Spindle Speeds: 200mm Spindle Separation with Swarf Conveyor and Heckler & Koch 'CNC 785-M' Control (2 off - 1990 & 1989) *SEE NOTICE PAGE 8*

White Sundstrand 'Series 20 Omnimil' Twin Pallet Horizontal CNC Machining Centre with 30 Station Toolchanger, 430 x 430mm Pallet Size, 360° x 1" Index Rotary Table, 24" X-Axis x 20" Y-Axis x 16" Z-Axis, 4th Axis Rotary Table & White Sundstrand 'Micro Swing' Multi Axis CNC Control Serial No. 176 (1984)

White Sundstrand 'Series 80 Omnimil' Horizontal Machining Centre with 90 Station Toolchanger, 60" x 60" Index Table, 10-1180 rpm Spindle Speeds, 6" Spindle Diameter, and Sundstrand 3-Axis CNC Control (1981)

White Sundstrand 'Series 80 Omnimil' Horizontal Machining Centre with 60 Station Toolchanger (1981)

Kaiser-Dixi 'Diaset' Optical Tool Pre-setter

Cincinnati 'CIM-X' 3 Axis NC Horizontal Machining Centre, Built-In Rotary Table, 60" x 24" Table with 'Acramatic 5' Control (1973)

Catalogue request line:

+44 (0)71-405 5501

Fax: +44 (0)71-405 9772

CNC MACHINING & TURNING CENTRES

BORERS, MILLS, GRINDERS & LATHES

DRILLING, INSPECTION & GENERAL EQUIPMENT

CNC TURNING CENTRES AND LATHES

Mazak '40N-ATC' Universal Slant Turn Mill Centre with 30 Station Toolchanger,

540mm Swing x 1500mm Turning Length, Hydraulic Tailstock, 'C' Axis Spindle, Swarf Conveyor, Spindle Speeds 6-3000 rpm & Mazatrol 'Cam T-3' CNC Control (1987)

Gildemeister 'GAC42' Automatic CNC Bar & Chucking Lathe with 8 Station Turret & Driven Tooling,

70mm Swing x 160mm Turning Length, 42mm Bar Diameter, 56mm Spindle Hole Diameter, Spindle Speeds 71-6300 rpm with B.M.F. Swarf Conveyor, Lemca 'Tal/Auto65/32' Automatic Bar Feed with Hydraulic Suspension & Gildemeister Automation 'Eltropilot' CNC Control
Serial No. 5.1164 (1991)

Wickman '76-250' 5 Axis CNC Turning Centre with Twin 8 Station Turrets & Driven Tooling,

325mm Turning Length x 270mm Swing, 76mm Bar Capacity, 250mm Chuck Capacity, 52mm Collet Bore, Max 4000 rpm, with Parts Catcher, Barfeed Interface, 2nd Op. Spindle, 22/26KW Main Motor and Fanuc '11 TT' CNC Control

Serial No. 30054 (January 1989)

Wickman '76-250' 2 Axis CNC Turning Centre with Programmable Tailstock, 12 Station Turret & Driven Tooling,

555mm Turning Length x 270mm Swing, 76mm Bar Capacity, 250mm Chuck Capacity, Max. 4000 rpm with Parts Catcher, LNS 'Hydrobar' Barfeed, Barfeed Interface and Fanuc 'OT' CNC Control (5 off)
Serial No. 30047 (1990) (11KW Motor)

Serial No. 30049 (1990) (12KW Motor)

Serial No. 30069 (1990) with Fanuc '10TF' CNC Control



Wickman '76-250' 4 Axis CNC Turning Centre with Fanuc '11 TT' CNC Control



Wickman '52-200' 5 Axis CNC Turning Centre with Fanuc 'OT' CNC Control

Serial No. 30055 (1989) (18KW Motor)

Serial No. 30036 (1988) High Bed Type (18/22KW Motor)

Wickman '76-250' 4-Axis CNC Turning Centre with

Programmable Tailstock, Twin 8 Station Turret & Driven Tooling,

555mm Turning Length x 270mm Swing, 76mm Bar Capacity, 250mm Chuck Capacity, Parts Catcher, Swarf Conveyor, LNS 'Hydrobar' Barfeed, Barfeed Interface & Fanuc '11TT' CNC Control
Serial No. 30051 (1990)



Mazak '40N-ATC' Slant Turn Mill Centre with Mazatrol 'CAM T3' CNC Control



Wickman '76-250' 5 Axis CNC Turning Centre with Fanuc '11TT' CNC Control



Wickman '76-250' 2 Axis CNC Turning Centre with Fanuc 'OT' CNC Control



Gildemeister 'GAC42' CNC Bar & Chucking Lathe with Eltrapilot CNC Control



Wickman 'KIS 26/130' CNC Bar and Chucking Lathe with Fanuc 'OT' CNC Control

- Wickman '52-200' 5 Axis CNC Turning Centre with Twin 8 Station Turrets & Driven Tooling,
325mm Turning Length x 270mm Swing, 52mm Bar Capacity, 200mm Chuck Capacity, 52mm Collet Bore, Max 4500 rpm with Parts Catcher, 2nd Op. Spindle, Nicholson Parts Conveyor, LNS 'Hydrobar' Barfeed & Barfeed Interface (2 off)
Serial No. 30012 (April 1988) with Fanuc '11TT' CNC Control (18.5/22KW Motor)
Serial No. 30001 (July 1986) with Fanuc '11TT' CNC Control (11/16KW Motor).
- Wickman '52-200' 4 Axis CNC Turning Centre with Programmable Tailstock, 8 Station Twin Turret & Driven Tooling, 555mm Turning Length x 270mm Swing, 52mm Bar Capacity, 200mm Chuck Capacity, Parts Catcher, Swarf Conveyor, LNS 'Hydrobar' Barfeed, Barfeed Interface with Fanuc '11TT' CNC Control

- Serial No. 30011 (1989)
Wickman '52-200' 2 Axis CNC Turning Centre with 12 Station Turret Tooling, 555mm Turning Length x 270mm Swing, 52mm Bar Capacity, 200mm Chuck Capacity, 52mm Collet Bore, Max 4500 rpm, Swarf Conveyor with Parts Catcher and Fanuc 'OT' CNC Control
Serial No. 30003 (December 1986 - Rebuilt 1992)
- Wickman K.I.S. '26/130' 2 Axis CNC Bar and Chucking Lathe, 26mm Bar Capacity, 130mm Chuck Capacity, Table Cross-Slide Travel (X-Axis) 550mm, Spindle Longitudinal Travel (Z-Axis) 100mm, with C-Axis, Interchangeable Platens, 'Acrovu-Feedmaster' Bar Feed Unit, Infinitely variable Speeds 60-6000 rpm, Barfeed Interface and Fanuc 'OT' CNC Control (3 off - 1990)
- Conemaster 'C2' Bar Chamfering Machine (1990)

CNC MACHINING & TURNING CENTRES

BORERS, MILLS, GRINDERS & LATHES

DRILLING, INSPECTION & GENERAL EQUIPMENT

CNC VERTICAL MACHINING CENTRES

Heckler & Koch 'BA 30' Twin Pallet Vertical Machining Centre with 36 Station Tool Magazine, 750mm X-Axis x 400mm Z-Axis, Spindle Speed 38-6000 rpm & Heckler & Koch 'CNC 785/2' Control (1988)

Heckler & Koch 'BA20' Twin Pallet Vertical Machining Centre with 2 x 12 Station Tool Magazines, 650mm X-Axis x 350mm Y-Axis x 200mm Z-Axis, Spindle Speeds 60-6000 rpm & Heckler & Koch '781' CNC Control (1982)

Bridgeport 'Series II Interact 4' CNC Vertical Milling Machine with Jones & Shipman 4th Axis Rotary Table & Heidenhain 'TNC151' CNC Control (1987)

Hurco 'MB1' 3 Axis CNC Vertical Milling Machine with 12 Station Toolchanger & Hurco CNC Control (1982)



Hurco 'MB1' CNC Vertical Milling Machine with Hurco CNC Control

Heckler & Koch Machines

Warranties & installation/ commissioning packages can be purchased for the Heckler & Koch 'Duomill 200' Horizontal Machining Centres and the 'BA30' Vertical Machining Centres from Heckler & Koch who will be in attendance at the auction.



Heckler & Koch 'BA 30' Twin Pallet Vertical Machining Centre with Heckler & Koch 'CNC 785/2' Control



Heckler & Koch 'BA20' Twin Pallet Vertical Machining Centre with Heckler & Koch '781' CNC Control



Bridgeport 'Series II Interact 4' CNC Vertical Milling Machine with Heidenhain 'TNC 151' CNC Control



1990

Webster & Bennett 'Series R' 72" Vertical Boring and Turning Mill



1971

Dixi '75-OF' Optical Bridge Type Horizontal Jig Borer



1970

Collet & Engelhard 'Minor' Horizontal Table Type Borer

VERTICAL & HORIZONTAL BORING & TURNING MILLS & JIG BORERS

Webster & Bennett 'Series R' 72" Vertical Boring & Turning Mill with Elevating Rail, Copying, Power Clamping, Power Feeds, 40hp Main Motor

Serial No. 7347-1 (1990)
Webster & Bennett 'Series R' 36" Vertical Boring & Turning Mill with Elevating Rail, Copying, 36" Elliptical Chuck, Power Clamping & Profile Tracing Attachment
Serial No. 7194-3 (1982)

Collet & Engelhard 'Minor' Horizontal Table Type Boring Machine, 700 x 1100mm Automatic Indexing Rotary Worktable, 90mm Spindle Diameter with Power Tool Clamping & Optical Fine Measuring Arrangement (1970)

Kearns 'No. 2' Horizontal Table Type Borer, 72" x 48" Table, 20" Dia Facing Head and 60" x 60" Sub Table

Dixi '75 OF' Optical Bridge Type High Column Horizontal Jig Borer, Table 900 x 800mm, Rotation of Table 360°, Imperial Execution & Vidimatic 'D3' NC Control (1971)

S.I.P. 'MP5F Hydroptic' Bridge Type Jig Borer with 1000 x 812mm Table, Imperial Execution

Giddings & Lewis Fraser 'DM Endomatic' Horizontal Facing & Centring Machine

Kitchen & Walker 'VB4' 4'0" Vertical Drilling & Boring Machine



1982

Webster & Bennett 'Series R' 36" Vertical Boring and Turning Mill



SIP 'MP-5F' Hydroptic Jig Borer



1990

Conemaster 'C2' Bar Chamfering Machine

Catalogue request line:
+44 (0)71-405 5501
Fax: +44 (0)71-405 9772

BORERS, MILLS, GRINDERS & LATHES

DRILLING, INSPECTION & GENERAL EQUIPMENT



CNC, CYLINDRICAL AND CENTRELESS GRINDERS

Shigiya 'GN-30B' 300mm x 1000mm
CNC Angle Head Cylindrical Grinder
with Marposs 'E9' In-Process Gauging
System, Swing Arm Type Internal
Grinding Attachment & Fanuc 'OOGC'
CNC Control (Installed April 1991)

Kellenberger '1000 U.R.' 250mm x
1000mm Universal Cylindrical
Grinder, with Internal Grinding
Attachment (1977)

WMW Erfurt 'SA6U x 1500' Universal
Cylindrical Grinder with Internal
Grinding Attachment, Capacity
515mm x 1500mm (1988)

WMW Erfurt 'SA5 x 1000' Plain
Cylindrical Grinder, Capacity 275mm
x 1000mm (1990)

WMW Erfurt 'SU315' Universal
Cylindrical Grinder with Internal
Grinding Attachment, Capacity
315mm x 1500mm (1973)

WMW Erfurt 'SA315/1 x 1000' Plain
Cylindrical Grinder, Capacity 315mm x
1000mm (1973)

Jones & Shipman '1302EIUR' 14" x 27"
Universal Cylindrical Grinder (1976)

Cincinnati-Heald '273A' Universal
Internal Grinder (2 off - 1975)

Fortuna 'Specima' Universal Cylindrical
Grinder with Internal Grinding
Attachment, Capacity 350mm x
1200mm

Jones & Shipman '1600' Cone Centre
Lapping Machine (1983)

WMW Mikrosa 'SASL' 200mm x 500mm
Centreless Grinder (1974)

Wickman-Scrivener 'No. 1' Centreless
Grinder (1975)



WMW Erfurt 'SA6U' x 1500 Universal
Cylindrical Grinder



WMW Erfurt 'SA5' x 1000 Plain
Cylindrical Grinder



WMW Erfurt 'SA 315/1' x 1000mm Plain
Cylindrical Grinder



Shigiya 'GN 30B' CNC Angle-Head Cylindrical Grinder with Fanuc 'OOGC' CNC
Control



Kellenberger '1000 UR' Universal Cylindrical Grinder



Jones & Shipman '1302 EIUR' Universal Cylindrical Grinder



Wickman Scrivener 'No.1' Centreless Grinder



Lumsden '92LE' Rotary Table Surface Grinder



Heald '273 A' Internal Grinder



Fortuna 'Specima' 350 x 1200mm Universal Cylindrical Grinder



Jones & Shipman '1400' 8" x 24" Surface Grinder



WMW Erfurt 'SU 315' x 1500 Universal Cylindrical Grinder



Thompson 'B8' Surface Grinder 14" x 48" Chuck

Rank Taylor Hobson Type 'D' Pantograph Engraving Machine, Rank Taylor Hobson Type 'G' Tool Grinding Machine, Double Ended Tool Grinders, Birkett-Cutmaster D/E Fettling Grinder, Morris 4" D/E Linisher, Lapping Machines etc

SLIDWAY, SURFACE, ROTARY TABLE, DRILLPOINT, THREAD & OPTICAL PROFILE GRINDERS

Favretto 'TC160/S' Slidway Grinder, 1600 x 500mm Table. Serial No. 585 (1975)

Schneider 'JOH2' Slidway Grinder, 1210 x 300mm Table

Snow 'RT600' Horizontal Spindle Rotary Table Surface Grinder, with 600mm Dia Table (1975)

Lumsden '92LE' 48" Vertical Spindle Rotary Table Surface Grinder

Jung 'HFR30H' Rotary Table Surface Grinder (1964)

Thompson 'B8' Surface Grinder with Magnetic Chuck (3 off)

Matrix Surface Grinder with 8" x 24" Magnetic Chuck

Jones & Shipman '1400' 8" x 24" Surface Grinder (1973)

Jones & Shipman '540' 6" x 18" Surface Grinder (2 off - 1977 & 1974)

Elliott '1018' 10" x 18" Surface Grinder (1978)

Matrix No. 47 Type '3' Universal Thread/Worm Grinder

Matrix No. 16 Universal Thread Grinder with Wheel Crusher

Staveley 3" Drillpoint Grinder (1978)

Brierley 'ZB32T' Drill Point Grinder (1973)

Cincinnati No. 2 Tool and Cutter Grinder (2 off - 1970)

Christen 'KB2' 6" Cutter Grinder

Snow 20" Table Type Ring Grinder

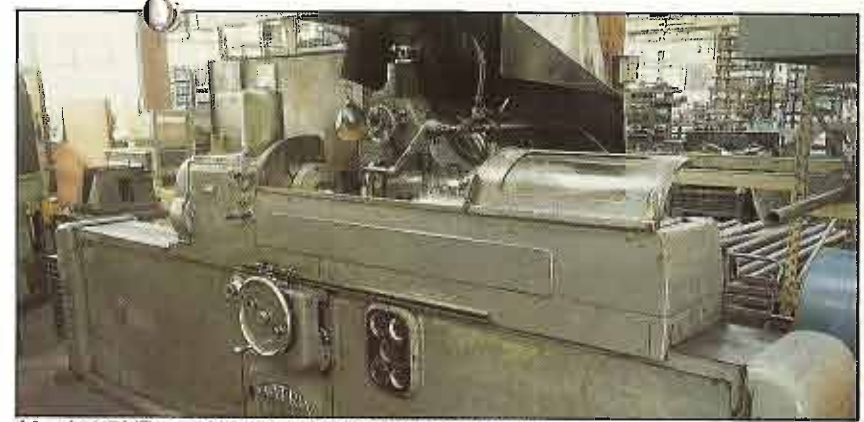
Wickman Optical Profile Grinder (Dec 1988)

BORERS, MILLS, GRINDERS & LATHES



Favretto 'TC 160/S' Slideway Grinder

1975



Matrix '47' 'Type 3' Universal Thread/ Worm Grinder



Thompson 'B8' Surface Grinder 12" x 36" Chuck



Brierley 'ZB32T' Drill Point Grinder

1973



Snow 'RT 600' Rotary Table Surface Grinder

1975



Schneider 'JOH2' Slideway Grinder



Jung 'HFR 30H' Rotary Table Surface Grinder

1964



Rank Taylor Hobson 'Type D' Pantograph Engraver and Type 'G' Tool Grinder

SS & SC, TURRET & CAPSTAN LATHES

Dean Smith & Grace '1910' x 140" SS & SC Straight Bed with Duplomatic Full Length Hydraulic Copying Attachment & Sony 2-Axis DRO (1980)
 Colchester 'Mascot 1600' 8½" x 40" SS & SC Straight Bed with Duplomatic Hydraulic Copying Attachment & Filematic High Speed Threading (1975)
 Harrison 'M300' 6" x 24" Gap Bed
 Colchester 'Student' 6" x 24" SS & SC Gap Bed (1971)
 Ernault-Somua 'S-Pilote' 455mm x 1500mm Copy Lathe
 Herbert '9C' Long Bed Combination Turret
 Herbert 'No. 5' & 'No. 4 Senior' Capstan (2 off)
 Ward 'No. 8' Turret with ejector drilling attachment
 Holroyd 12" Oil Grooving Lathe

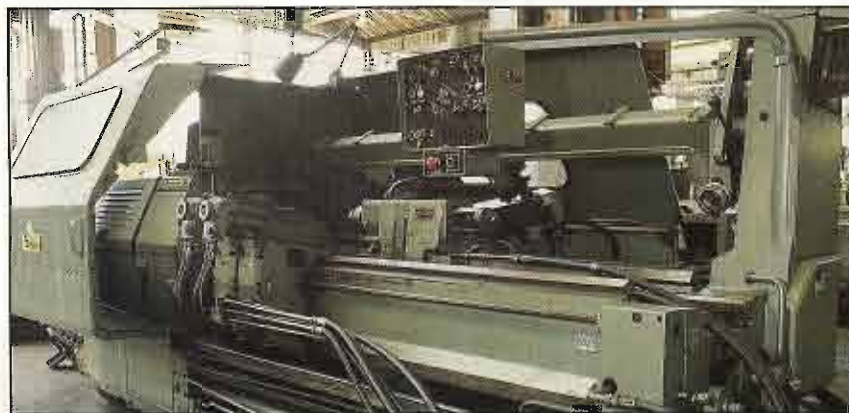
Catalogue request line:

+44 (0)71-405 5501

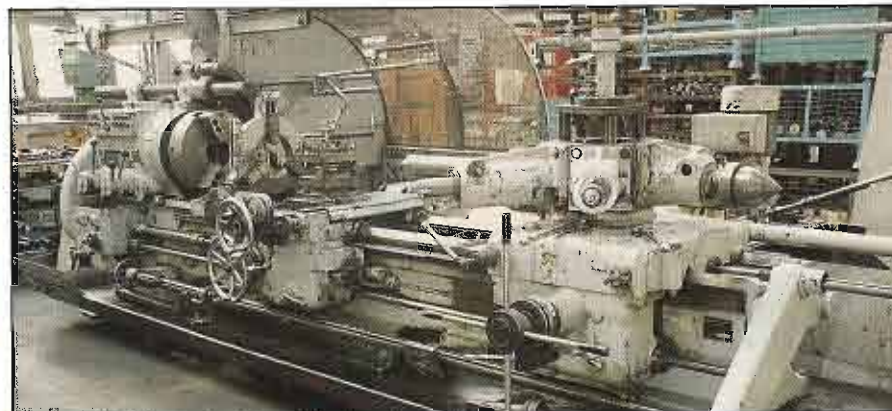
Fax: +44 (0)71-405 9772



Dean, Smith & Grace '1910' x 140" SS & SC Lathe with Sony 2 Axis D.R.O.



Ernault-Somua 'S-Pilote' Copy Lathe



Herbert '9C' Long Bed Combination Turret Lathe

BORERS, MILLS, GRINDERS & LATHES

DRILLING, INSPECTION & GENERAL EQUIPMENT

MILLING & PLANING MACHINES

Maho 'MH600P' Universal Milling & Boring Machine with 700 x 340mm Table, Rotary Indexing Table, Slotting Attachment & Heidenhain 'TNC121' NC Control. Serial No. 61371 (1979)

Cincinnati Milacron '420-16 EDO' Plain Cinedo Horizontal Mill with Table 80" x 16" (2 off - 1974)

Kearney & Trecker Milwaukee '315-S-15' Vertical Mill with Table 68" x 15"

Kearney & Trecker Milwaukee '307-S-12' Horizontal Mill with Table 62" x 12" (2 off - 1971)

Kearney & Trecker Milwaukee '205-S-12' Horizontal with Table 56" x 12" (1976)

Herbert '47V' Vertical Mill with Table 72" x 17"

Heller 'FV-120-2' Vertical Mill with Table 1600 x 500mm

Butler Openside Planer, with Table 48" x 23"



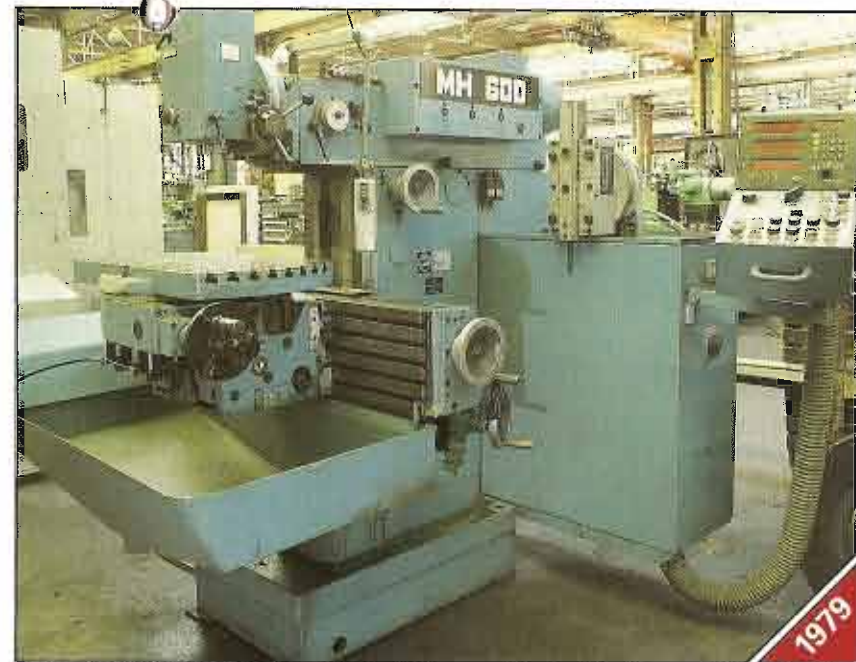
Kearney & Trecker Milwaukee '315-S-15' Vertical Mill



Heller 'FV-120-2' Vertical Mill



Kearney & Trecker Milwaukee '307-S-12' Horizontal Mill



Maho 'MH600P' Universal Toolroom Milling and Boring Machine with Heidenhain 'TNC 121' NC Control



Cincinnati '420-16' Plain Cinedo Horizontal Mill

BORERS, MILLS, GRINDERS & LATHES

**Over 30 CNC
Machines
For Sale**

**Over 1000 Lots of
Engineers Loose Tools
& Inspection
Equipment**



Barber Colman '16-56' Horizontal Gear Hobber



Kitchen & Walker 'T2' 38" Radial Arm Drill



Asquith Portable Elevating Radial Arm Drill



Goulder Mikron '2R' and '12' Gear Checkers & Taylor Hobson 'Talymin' 4-10' Printer



Jameson 'EB3' CNC Bridge Type Milling, Boring and Drilling Machine with Acramatic '900' Control



Kitchen & Walker 'E2' 4' 6" Elevating Radial Arm Drill

GEAR MACHINERY

Matrix 'No. 47' 'Type 3' Auto Indexing Thread Worm Grinder, 14" Max.
Swing x 42" with wheel crusher
Barber-Colman '16-56' Horizontal Gear Hobber, Extra Long Bed, 6DP
Orcutt Horizontal Spline Grinder
Goulder Mikron Type '2R' & '12' Gear Checking Machines, Parkson Gear Testers (4 off)
Gleason No. 6 Rolling Gear Tester

DRILLING MACHINES

Jameson 'EB3' CNC Bridge Type Milling, Boring & Drilling Machine, 84" x 66" Table, 6 Ton Table Load, Retrofitted with 'Acramatic 900' CNC Control (Rebuilt 1984)
Kitchen & Walker 'E4' 8'0" Elevating Radial Arm Drill with Spindle Brake & Box Table (1970)
Asquith 'OD1' 4'6" Elevating Radial Arm Drills each with Box Table
Kitchen & Walker 'E2' 4'6" Elevating Radial Arm Drill with Box Table (1973)
Kitchen & Walker 'T2' 38" Radial Arm Drill with Rise & Fall Table (1978)
Qualters & Smith 3'0" Radial Arm Drill with Rise & Fall Table & Spindle Brake
Asquith Portable Elevating Arm Radial Drill 'OD1'
Meddings, Fobco, Elliott, Progress, Startrite & Herbert Pillar and Bench Drills (20 off)

Catalogue request line:
+44 (0)71-405 5501
Fax: +44 (0)71-405 9772

SAWS & SLOTTERS

Kasto 'HBS 150/170' Power Hacksaw
 Qualters & Smith 'B12A' 10" Automatic
 Horizontal Bandsaw
 Qualters & Smith '180A' 180mm
 Horizontal Bandsaw
 Startrite '24-V-10' 24" Vertical Bandsaw
 MAS Kovosit 'HOV25A' 300mm Vertical
 Slotter with 500mm Rotary Indexing
 Table, Power Feed, 0-10° Tilt on
 Traverse Ram

MISCELLANEOUS

JLS 550°C Stress Relieving Oven with
 Travelling Bogey 13' x 6'
 VBT '300' Vibratory Bowl Finisher (1990)
 Hancock 'Arc Trace' Profile Cutting
 Machine, Oxford 'RT250' Portable Arc
 Welder, B.O.C. 'MNR 400' D.C.
 Welding Rectifier, Murex 'SCC041' 300
 Amp Portable Arc Welder
 Electro Arc '2DB' Tap Disintegrator
 Binks-Bullows Twin Spray Booths with
 Equipment (3 off)
 50, 30 & 12 Ton Hydraulic Presses
 Delapena Manual Horizontal Honer
 Platform & Bench Scales, Portable
 Filtration Units, Space Heaters etc



Mas Kovosit 'HOV 25A' 8" Slotting Machine



J.L.S. 550° Stress Relieving Oven



Electro Arc '2DB' Tap Disintegrator

**Over 1000 Lots of
 Engineers Loose Tools
 & Inspection
 Equipment**

**Catalogue request line:
 +44 (0)71-405 5501
 Fax: +44 (0)71-405 9772**



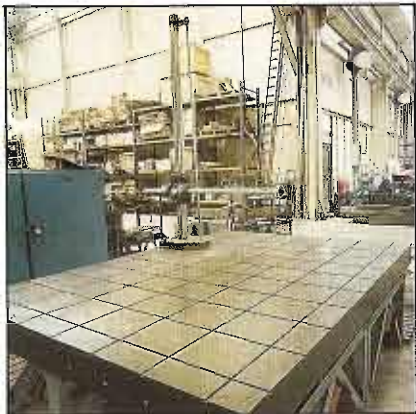
Qualters & Smith 'B12A' 10" Horizontal
 Bandsaw



VBT '300' Vibratory Bowl Finisher



Hi-Ton 30 Ton Straightening Press



Portage Layout Machine



SIP Rotary Tables



Surface Table and Inspection Equipment

INSPECTION EQUIPMENT

including:
 Portage '36A' Layout Machine
 Wilson 'PG-JR' & Indentec Hardness Testers (2 off)
 Comparators, Height & Slip Gauges, Bore Gauging Machines, Spring Testers, Micrometers, Verniers, Plug & Gap Gauges, Parallels, Sine Bars, Engineers Squares, Granite Surface Tables & Plates (10 off) including 'TL' 8' x 6' Table, C.I. Marking-Out Tables etc

ENGINEERS LOOSE TOOLS & EQUIPMENT

An enormous range including: Rotary Tables, Dividing Head Sets, Vee & Setting Blocks, Bench & Machine Vices, Magnetic & Lathe Chucks, Angle & Box Plates, Sine Tables, Taps, Dies, Reamers, Collets, Milling Cutters, Hobs, Twist Drills, Grinding Wheels, 'G' & Rack Clamps, Tool Cabinets (Over 100), Dexion Racking, Work Benches, Lockers etc



Morris 5 Tonne Twin Girder Electric Overhead Travelling Crane, 42' Span



Morris 25 Ton Twin Box Girder Electric Overhead Travelling Crane, 42' Span

TRAVELLING & JIB CRANES

Morris 25 Ton Twin Girder Overhead Electric Travelling Crane, 42' Span with Pendant Control
 Morris 20 Ton Twin Girder Electric Overhead Travelling Crane, 42' Span with Pendant Control (3 off)
 Morris 15, 10 & 5 Ton (4 off), 3 Ton (12 off) & 2 Ton (4 off) Twin Girder Overhead Travelling Crane, 29' Span & 42' Span
 Roland Priest 35 cwt Wall Mounted Swing Jib with 250kg Chain Hoist
 Wall Mounted & Pillar Swing Jibs with Hoists, 10 cwt (11 off) & 5 cwt (6 off)



Morris 20 Ton Twin Girder Electric Overhead Travelling Crane, 42' Span



Morris 500kg Swing Jib and Acrow 10 cwt Swing Jib

DRILLING, INSPECTION & GENERAL EQUIPMENT



INTERNAL TRANSPORT

Lansing Bagnall 'FOER 7/50/24' 5000lbs Electric Reach Truck with Jib Attachment
 Lansing Bagnall 'FRER' 4500lbs Electric Ride-On Reach Truck (4 off)
 B T 'BTL5V1000/8' 2200lbs Electric Ride-On Pallet Truck
 Walter-Broadley '6605HD' Electric Floor Scrubbing Machine
 International 'T8' Floor Sweeper
 Pallet Trucks, Sack Trucks etc



Pulsair 'CS90' Air Compressor

COMPRESSORS

Atlas Copco 'GA808' Packaged Rotary Air Screw ARP 820858
 HPC-Pulsair 'CS90' Packaged Air (1980)
 APE Bellis & Morcom 'PBM30' 'V' Type Packaged Air (2 off)
 Deltec 'HGE 750' Compressed Air Dryer (1991)
 Farrer Grade 'D' & 'E' Air Receivers (4 off)



Boardroom Furniture

OFFICE FURNITURE & EQUIPMENT

OCE & GAF Ammonia Plans Printers, Pitney Bowes Franking Machine, Wooden & Steel Plans Chests & Cabinets, 4-drawer Filing Cabinets (Over 100), Drawing Boards, Desks, Boardroom Tables & Chairs, Canteen Furniture & Kitchen Equipment



Lansing Bagnall Reach Trucks

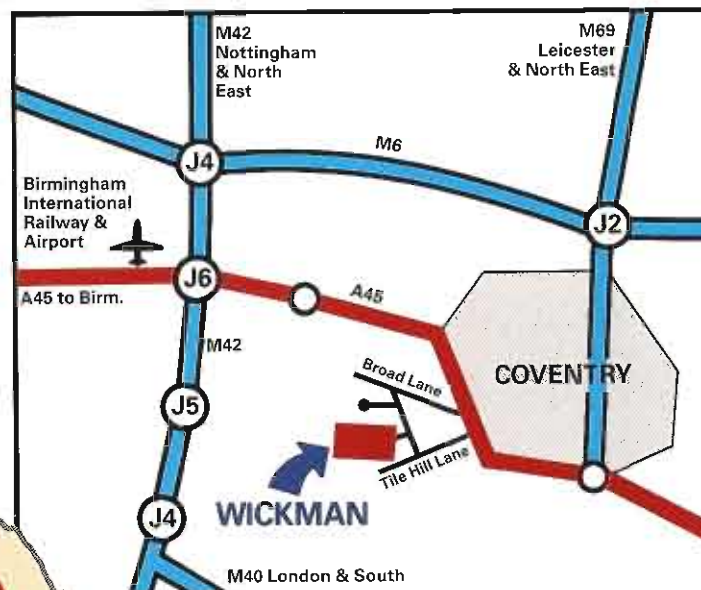


Atlas Copco 'GA808' Rotary Screw Air Compressor

Catalogue request line:

+44 (0)71-405 5501

Fax: +44 (0)71-405 9772



Directions to Works

From M42 Exit Junction 6 onto A45 to Coventry, continue on A45 to Coventry for 7 miles, on approaching first major set of Traffic Lights ("Phoenix" Public House on right across Junction) take right hand filter lane. Turn right onto Broad Lane (signposted Eastern Green/Berkswell) proceed for 1½ miles; take first left hand turn into Banner Lane (Vauxhall Garage on right at 'T' Junction) and proceed for approx ½ mile passing Massey Ferguson Factory on right and turn right into Works and follow signs to Auction Car Park

From M1 take Junction 17, follow M45 signposted Coventry - proceed onto A45 for 11 miles through 4 roundabouts. After passing "Matrix Churchill" Factory on left turn left at next Traffic Lights (Rubicon Casino on left), signposted B4101 - Tile Hill, continue for 1½ miles turning right into Banner Lane (signposted Berkswell/Meriden) Works are 500 yards on left hand side.

Hotels

De Vere Hotel, Cathedral Square, Coventry CV1 5RP.

Tel: 0203 633733. Fax: 0203 225299.

Forte Post House Hotel, Rye Hill, Allesley, Coventry.

Tel: 0203 365000. Fax: 0203 362422.

Brandon Hall Hotel, Brandon, Nr. Coventry.

Tel: 0203 542571. Fax: 0203 544909.

Air Travel

The nearest Airport to the site at Coventry is Birmingham International Airport which services all the major European and International destinations. The Airport is approximately 30 minutes by car from the site. London Heathrow is approximately 90 minutes by car from the site.

IMPORTANTE VENTA POR SUBASTA DURANTE DOS DIAS

Una oferta excepcional de centros de maquinado y torneado, de maquinas herramienta de taller y de produccion, y de equipos de inspeccion y de fabrica - todos modelos casi nuevos, en excelente estado y de alta calidad.

GROSSER ZWEITÄGIGER AUKTIONSVERKAUF

Ein aussergewöhnliches angebot an grossartigen, neuen, hochqualitativen CNC bearbeitungs- und drehzentren, werkzeugmaschinen für werkzeugmacherei und produktion, fabrik- und qualitätsprüfeinrichtungen.

GRANDE VENTE AUX ENCHÈRES DE DEUX JOURS

Offre exceptionnelle de centres d'usinage et de tournage CNC, machines-outils d'atelier d'outillage et de production, et équipements d'inspection et d'usine en parfait état, de construction récente, et de haute qualité.

GRANDE ASTA PER DUE INTERE GIORNATE

Una gamma eccezionale di macchine con controllo numerico computerizzato & torni eccellenti, moderni e di altissima qualità, utensileria & utensili per la produzione a macchina, attrezzature per ispezioni & fabbriche.

Head Office: Brownlow House, 50/51 High Holborn, London WC1V 6EG

Tel: +44 (0)71-405 8411. Fax: +44 (0)71-405 9772. Telex: 897377

Phoenix House, 1-3 Newhall Street, Birmingham B3 3NH

Tel: +44 (0)21-236 5736. Fax: +44 (0)21-236 3538

Other Regional Offices:

Leeds, Bristol, Cardiff and Leicester.

POLAND - WARSAW - HENRY BUTCHER POLAND SP.

Tel: 482 628 30 74 Fax: 4822 29 70 30

Contact: Mr. Wolochowicz

HONG KONG - HENRY BUTCHER (HONG KONG) LTD.

Tel: + 852 833 6661 Fax: + 852 865 6381

Contact: Mr. Francis Yau

SINGAPORE - HENRY BUTCHER SINGAPORE PTE. LTD.

Tel: + 65 33 92422 Fax: + 65 33 93400

Contact: Mr. Neil Smith

Other Offices:

Aberdeen, Edinburgh, Glasgow, Belfast, Dublin.

Associates throughout Europe, Australasia, North and South America.

MALAYSIA - KUALA LUMPUR

HENRY BUTCHER LIM & LONG SDN. BHD

Tel: + 603 238 0485 Fax: + 603 232 3628

Contact: Mr. Gary Liew

PHILIPPINES - HENRY BUTCHER & CO. (PHILIPPINES) INC.

Tel: + 632 851 205 Fax: + 632 833 5323

Contact: Mr. Matthew Freeston

Catalogue request line:

+44 (0)71-405 5501

Fax: +44 (0)71-405 9772

**HENRY
BUTCHER**
INTERNATIONAL AUCTIONEERS
VALUERS SURVEYORS
AND AGENTS