



# EXETER MACHINE TOOLS (MIDLANDS) LIMITED

780 KINGSBURY ROAD, ERDINGTON, BIRMINGHAM, B24 9PS, ENGLAND

Tel: 021-384 7000

Telex 337682

**KINDLY NOTE OUR NEW ADDRESS AND TELEPHONE NUMBER**

## STOCK LIST

*\* See pages 7 - 10 for details of machines ex site - SWEDEN*

**OF SUPERB CNC and STANDARD MACHINE TOOLS**



NEW 1982 — PERFECT  
£160,000

OKUMA CNC Machining Centre Model MCVA 16 x 30. Table 1200 mm x 3100 mm. Admits 1650 mm between columns Admits 1350 mm under rail. Spindle taper 50. Speeds 50-3600 rpm Spindle motor 18 kw — D.C. 24 POSITION AUTOMATIC TOOLCHANGER OSP 3000 M CNC with C.R.T. display. Right Angle Milling Head. Perhaps the finest machine available in the used machine tool market.



CINCINNATI 10VC 1250 and 10VC 1000 Vertical Machining Centres.

New 1981 — PERFECT  
£49,000 and £44,000

With ACCRAMATIC CNC model MC.

30 Position Automatic Toolchanger.

Superb machines. Superb tooling.

VISITORS FROM NORTH WILL FIND US JUST 1½ MILES FROM JUNCTION 6 on the M6 Motorway. Follow the Birmingham N.E. sign (A38) onto Tyburn Road and then Kingsbury Road. We are on the left opposite AUSTIN ROVER Toolroom and PRESSED STEEL FISHER.

VISITORS FROM SOUTH leave at JUNCTION 5 — cross back under the motorway past the JAGUAR BODY PLANT to KINGSBURY ROAD (A38) and turn left towards City Centre — We are on the right, 1 mile from Motorway.

NORTHERN AGENT - JOHN LONGSTAFF, JAYS PRODUCTION SERVICES LTD. - NEWCASTLE 0632-811020

EUROPEAN AGENT - FRANS VAN DEVLIEET, TINCA MACHINES EUROPE B.V. - HOLLAND 33 620 774

## AUTOMATICS — MULTISPINDLE and SINGLE SPINDLE



WICKMAN 1' x 6. SPINDLE STOPPER. Pick Up Attachment Fully reconditioned. New 1973 £27,500



ESCO D4 Coil Fed Auto. £5,950



HERBERT — BSA GRIDLEY 8 spindle 6 inch chucks. Double indexing. New 1971 £12,750

Other Automatics in stock:—

WICKMAN 1' x 6 — Spindle Stopper. Excellent condition  
New 1968. £22,500.

WICKMAN 1' x 6 — New 1956. Fully rebuilt and offered  
with 12 months warranty. £16,500.

WICKMAN 1' x 6 — New 1960. Excellent. £12,000.

### WANTED — AUTOMATICS

Our stocks of automatics and other machines is constantly changing and we **need** to buy. Please give us the opportunity to offer for your surplus machines.

### JIG BORERS see also CNC section



SIP 5E JIG BORER.  
35" x 30". Superb and fully  
equipped machine. £27,000



HAUSER OP3 JIG BORER  
23" x 12½". Superb and fully  
equipped machine. £10,000



MOORE No. 3 JIG BORER  
24" x 11". Superb and fully  
equipped. 1970. £18,000

**VERTICAL BORERS — Standard and N.C.**



On left — WEBSTER & BENNETT 48 EM — fitted with Copying, Power Indexing, Superb. 1968. £20,000

On right — WEBSTER & BENNETT 36 EM. Superb. £11,000



BERTHIEZ IQ 9320/2. Table 1000 mm. Pentagon turret and sidehead. High quality. £7,750.



WEBSTER & BENNETT 48 NC.  
54" table diameter. Speeds 8/300 rpm. Offered for sale with existing GE MARK CENTURY N.C. (can be viewed under power) Price £23,000.  
ALTERNATIVELY — This is a good machine for Retrofit with current system.

Also available ex stock:—  
WEBSTER & BENNETT 48" DH. New 1962. Excellent condition. Extra height. £8,500.

**HAVE YOU SEEN THE OTHER SUPERB  
N.C. and standard VERTICAL BORERS  
still on site near STOCKHOLM,  
SWEDEN?**

**See pages 7 and 8 for details of these and  
other machines at that factory.**

**SPECIAL INSPECTION OFFER on page  
10.**



JAMESON F487 MILLING and BORING MACHINE.  
Table 126" x 66". 31-1808 rpm. 1979 — fitted DATASAAB  
MTC 9 control. Absolutely Superb. £35,000.



KITCHEN and WALKER N.C.  
Drill. 1 3/4" drilling capacity. 72" x  
36" 2 axis N.C. 1972. £7,250.



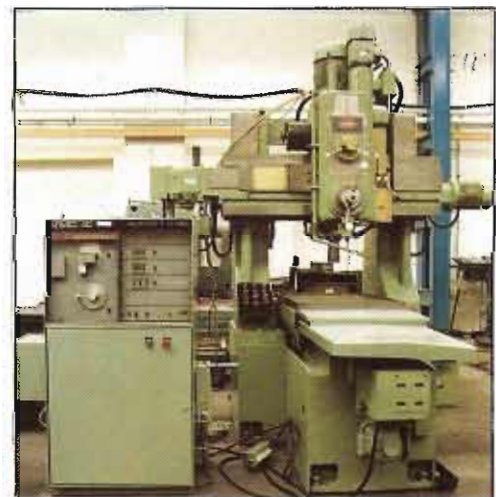
NEWALL BURGMASTER  
MODEL 2B AUTOCYCLE  
TURRET DRILL, coupled with  
simple N.C. 2 axis work table.  
Excellent. 1973. £4,950.



DeVLIEG 4K72  
Horizontal JIG MILL  
Price £45,000 with  
existing N.C.  
New 1974. Ideal for  
retrofit CNC.



NEWALL Model 24N43 CNC JIG BORER Table 43" x  
24", 18-Spindle Speeds 48-2500 rpm. Recent retrofit/  
Refurbishment POSIDATA. 1800 CNC. £22,000



HERBERT CD32 N.C. Drill 2" drilling capacity.  
30" x 20" 2 axis N.C. AIRMEC AUTOSET 410.  
1967. £3,500.

## BORING and DRILLING MACHINES — N.C. and C.N.C.



VERO Vertical Machining Centre.  
20 position TOOLCHANGER  
Excellent low cost machine £7,000.



BUTLER Hi POWER ELGAMILL. 10m x 1m bed. 24 h.p. DC  
main spindle. D.C. Drives. Universal head — MPS Microprocessor  
Control Systems. Superb 1980. £76,000.

## 2 EXCEPTIONAL GEAR GRINDING MACHINES



NILES ZSTZ 800. New 1965. 800 mm diameter. 2-  
14 Modul. 45° helical. 2000 kg table load. Well  
equipped. £14,500.



REISHAUER AZA. New 1977 300 mm dia.  
capacity. One of the best ever seen on the market.  
£90,000.

**WANTED** — we are always looking for **good quality N.C. and C.N.C. Machine Tools** which may be surplus to your requirements.

## DRILLING MACHINES



ASQUITH POWER THRUST RADIAL  
DRILL Model 6PT. 27" dia. column 168" radius  
New 1978 — SUPERB — £22,500

ARCHDALE Preslector Radial. 120" radius  
17 h.p. spindle. New 1960. £6,750.

MAS VR2 Toolroom Radial 36" radius Neat rise  
& fall arm model. Perfect £2,150.

HERBERT No. 2 Flashtapper £950.

**MORE DRILLING MACHINES ON SITE IN  
SWEDEN — ask for details.**

## GEAR CUTTING MACHINES



SUNDERLAND G250 DHS Gear  
Planer 2550 mm dia. x 510 mm  
face width. Double cutting helical  
and straight. ABSOLUTELY  
SUPERB. 1978. £145,000.

### GEAR TECHNOLOGY

Would you like a sample copy of  
this exceptional new publication?

### Also available ex stock:—

CHURCHILL RH8 RIGIDHOBBERS. Hydraulic Hob heads. Several 1966-71. £2,650.

CHURCHILL S815 RIGIDHOBBERS. Hydraulic Hob heads. Several 1958/65 from £1,750

LEES BRADNER 7HD RIGIDHOBBER. Superb 1970 machine. £2,950.

PFAUTER P900 heavy duty Universal Gearhobber. 36" dia. x 2½ d.p. 1962. £15,000.

SYKES 1B Horizontal Multicutter Gear Generator. 17" dia. Superb. £8,750.

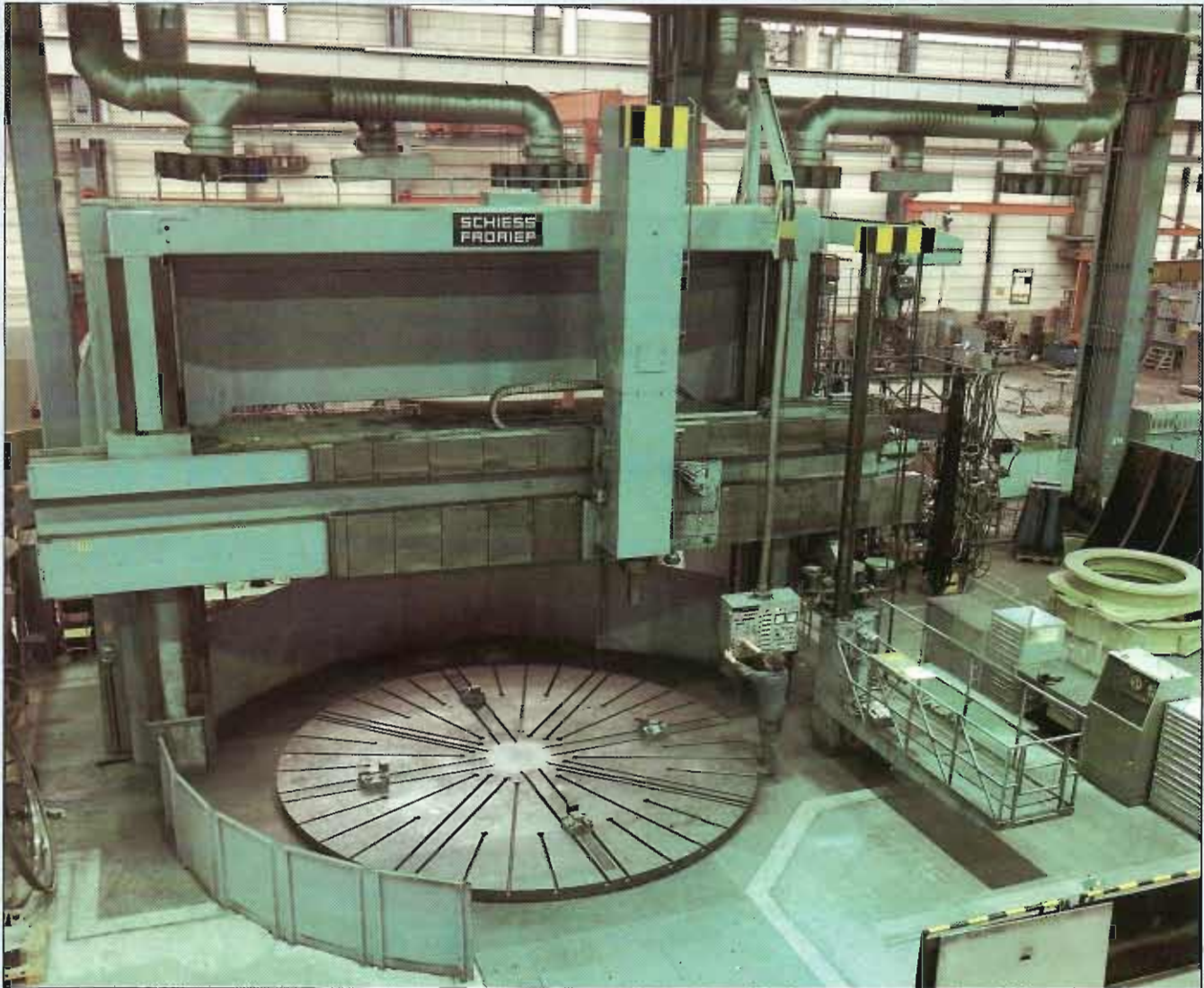
SYKES 1A Similar — 12" capacity. Recently reconditioned. Excellent. £4,250.

MAXICUT 3A Vertical Gear Shaper. 18" diameter. With riserblock. £3,250.

**WANTED — PLEASE OFFER US YOUR SURPLUS MACHINES**

**OFFER FOR SALE FROM SITE  
near STOCKHOLM, SWEDEN  
SOME OF THE FINEST LARGE CAPACITY  
MACHINE TOOLS WHICH HAVE EVER BEEN BUILT**

**ONE OF THE NINE EXCELLENT VERTICAL BORING AND TURNING MACHINES**



SCHIESS FRORIEP Type KZ 600/750-410 N.C. VERTICAL BORER.  
Table 6000 mm diameter. Swing 7500 mm. Maximum turning height 4100 mm. Maximum table loading **100 tons**. Main motor 125 hp. 0.315-31.5 rpm BOSCH MASING 800 Continuous Path Numerical Control. Full manual controls. NEW 1972. IMMACULATE. AT A FRACTION OF REPLACEMENT COST.

THESE MACHINES HAVE BEEN CAREFULLY USED IN THE HIGHEST QUALITY MANUFACTURING FACILITY. ENGINEERS AND MANUFACTURERS REPORTS ON CURRENT CONDITION ARE AVAILABLE

PRICE LIST AVAILABLE ON REQUEST SHOWING **TOP** AND **BOTTOM** PRICES. 15% DISCOUNT from TOP prices offered on deals completed **before** the official inspection period. During the inspection period **any** offer above **BOTTOM** price will have response within 24 hours.

THESE MACHINES MUST BE SOLD DURING NEXT FEW MONTHS.

SEE OVERLEAF FOR INSPECTION and OTHER DETAILS

**MORE VERTICAL BORERS ex site near STOCKHOLM, SWEDEN**



**SCHIESS FRORIEP 32 DE 300 N.C. VERTICAL BORER.**  
 Table 3000 mm diameter. Swing 3200 mm. Max height 2500 mm.  
 Maximum table loading 20 tons 1-100 rpm.  
 ASEA NUCON 312 Continuous Path Numerical Control.  
**NEW 1974. EXCELLENT.** At a fraction of replacement cost.



**SCHIESS FRORIEP DS 20 N.C. VERTICAL BORER**  
 with **AUTOMATIC TOOLCHANGER** — 32 station.  
 Table 2250 mm diameter. Swing 2500 mm. Max height 1600 mm.  
 Maximum table loading 12.5 tons. 2-160 rpm.  
**BOSCH 800 N.C. Continuous Path. NEW 1973. EXCELLENT**  
 + similar 1971 machine also available.

**ALSO AVAILABLE**

**GIDDINGS and LEWIS 60" N.C.**  
 60" table, 72" swing, 60" height. 5  
 station turret. 100 h.p. main motor —  
 D.C. drive. Pendant control + G.E.  
 Mark Century N.C. + D.R.O. **1967**

**DÖRRIES SD 180**  
 Table 1600 mm. Swing 2000 mm. 2-  
 150 rpm. 1150 mm height HEID Copy  
 Turning. Screwcutting. **DIGITAL**  
**READOUT** on **PENDANT** 5 station  
 turret. **1968**

**DÖRRIES SD 200**  
 Table 200 mm. Swing 2200 mm. 2-150  
 rpm. 1180 mm height. HEID Copy  
 Turning. **PHILLIPS DRO.** Pendant.  
 75hp. **1973**

**DÖRRIES SD 160.**  
 Table 1600 rpm. 1000 mm height.  
 Screwcutting. Pendant. **1958**



— **NORTH & SOUTH AMERICA**  
**CONTACT**

**CADILLAC MACHINERY Co. Inc.**  
 PO box 1405, ELKGROVE VILLAGE  
 ILLINOIS 60007  
 Tel (312) 4376600. Telex 210083



**BERTHIEZ BM 225 OPENSIDE VERTICAL BORER.**  
**Retractable Table**  
 2250 mm diameter. SWING 4500 mm. Maximum height 200 mm.  
 1-100 rpm.  
**PENDANT.**  
**NEW 1959. EXCELLENT.** Fitted **DIGITAL READOUT.**



**SOME MORE SUPERB MACHINES ex-site near STOCKHOLM, SWEDEN**



SUNDSTRAND Model H45-SC  
Horizontal 4 AXIS MACHINING  
CENTRE. CNC — D.C. spindle &  
D.C. drives to axes. Twin pallet  
machine — pallets 812 mm dia. 25  
h.p. D.C. spindle — 10 to 2500 rpm.  
X travel — 1220 mm, Y (vertical) —  
2055 mm, Z (column in/out) — 915  
mm. Rotary table (B axis) — 360,000  
positions. 40 POSITION  
AUTOMATIC TOOLCHANGER  
NEW 1977 — EXCELLENT.

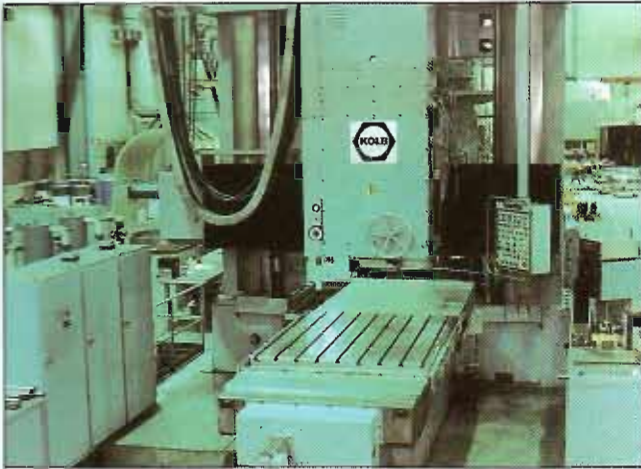


JOHANSSON 3UC UNIVERSAL  
GRINDER Capacity 670 mm dia. x  
3000 mm length. 6 ton work load  
capacity  
NEW 1974 — EXCELLENT

WALDRICH SIEGEN WSTU 25SP  
TRAVELLING WHEELHEAD  
ROLL GRINDER Capacity 2000 mm  
dia. x 4700 mm length 25 ton work  
load capacity. FACE GRINDING  
ATTACHMENT.  
NEW 1969 — EXCELLENT



**SOME INCREDIBLE LOWCOST OPPORTUNITIES ex SWEDEN**



**KOLB JIG BORER.** 2250 mm x 1700 mm. 2430 mm between columns. 2280 mm height. 1974 — MAGNIFICENT — £35,000



**BURKHARDT JIG BORER.** 2500 mm x 1850 mm. 2500 mm between columns. Accepts 17 tons on table. 1969 — MAGNIFICENT — £35,000.

**BURKHARDT JIG BORER.** 1200 mm x 1050 mm. OPEN FRONTED MACHINE. 1970. £9,500.



**AMERICAN 5035 NC lathe** — 1970 — £14,500



**AMERICAN 5035 NC lathe** — 1966 — £9,000.



**CAMUT VERTICAL GRINDER** 2100 mm x 550 mm. 80 h.p. 1976 — £19,500.

**CINCINNATI 420-225 TRACER CONTROLLED HYPOERMATIC** Quick change gearbox. 1971. £19,500.

**HELLER PFH100 11K TRACER CONTROLLED HORIZONTAL MILL.** Table 2000 mm x 500 mm. 20 KW. 20-755 rpm. 1971. £18,500.

**OFFICIAL INSPECTION PERIOD**

FRIDAY 16th NOVEMBER — SATURDAY 24th NOVEMBER 1984.

**Special Offer:-** During this period we are able to offer special hotel rates in Copenhagen with private charter flights to the plant.

**Non Buyers** who could show that our descriptions were not accurate and that their inspection had been a waste of time would be reimbursed with travelling expenses.

WE ARE VERY CONFIDENT IN THE EXCELLENT CONDITION OF THESE MAGNIFICENT MACHINES AND IN THE OUTSTANDING VALUE THEY REPRESENT.

THIS OFFER APPLIES TO ALL MACHINES ON THIS PAGE AND THREE PRECEDING PAGES.

**SPECIAL INSPECTION PERIOD OFFER.**

**MANY MORE ITEMS AVAILABLE - send for full list**

SUPERB FURNACES — WELDERS — PORTAGE FLOORPLATES — MORE MILLS & LATHES — PROFILE GRINDERS

SIP PROJECTORS — TOOL LAPPERS — POLISHING MACHINES — GEAR DEBURRING — PROFILE BURNERS

**GRINDING MACHINES — all excellent and well equipped**



CINCINNATI No. 1 TOOL & CUTTER. Very well equipped. 1978. £2,950.



JONES & SHIPMAN 1310 EIUR UNIVERSAL 8" x 18" INTERNAL. 1963. £3,850.



TAFT PIERCE M100 SURFACE HIGH PRECISION. 1978. £3,500.



CINCINNATI 220-8 CENTRELESS AUTO PLUNGE & THRUFEED. 1973. £9,750.



WASINO OPTICAL PROFILE GRINDER Very Versatile. 1971. £3,950.



LUMSDEN 93ML VERTICAL SURFACE. 60" magnetic chuck. 60 h.p. 1975 — £22,000.

**Also available from stock**

JONES & SHIPMAN 1011 27" x 12" SURFACE. Minor fire damage. In process full check. All features. SUPERB. 1976 — £6,950.

JONES & SHIPMAN 1540P. 18" x 6". 1967 — £2,650.

MATRIX-THOMPSON C22 SURFACE 72" x 22" magnetic chuck. 1961 — £9,500.

CINCINNATI 220-8 CENTRELESS. 1968 — £7,750.

WICKMAN 2J CENTRELESS 5" dia. 1973 — £3,250.

WICKMAN CADET 1" CENTRELESS. 1973 — £1,850.

JONES & SHIPMAN 1070 hand CYLINDRICAL — £2,950.

JONES & SHIPMAN 1212 ditto. 1965 — £950.

JONES & SHIPMAN 1310 UNIVERSAL. 1965 — £2,950.

JONES & SHIPMAN 310 TOOL & CUTTER. 1967 — £1,850.

JONES & SHIPMAN 1235 TOOL & CUTTER. 1971 — £1,850.

PETWE PF3 OPTICAL PROFILE GRINDER — £2,750.

**JUST PURCHASED — VOUMARD 5A INTERNAL GRINDER with FACING HEAD. 1973. £13,000.**

**CNC and MANUAL — LATHES**



NAKAMURA TMC4 CNC LATHE. 400 mm swing. 300 mm chuck. PROGRAMMABLE TAILSTOCK. 12 position Tool Turret. FANUC 6TB with C.R.T. Display. NEW 1981.



MONFORTS RNC 1071 E CNC LATHE. At present set up for collet loading. Can be set up also for chucking. 12 position tool turret. 22KW d.c. drive. G.E.1050 CNC. NEW 1980. PERFECT. £32,500.



SCHAUBLIN 102-80 PRECISION LATHE Variable speed models. Equipped milling & grinding. £2,250.



DEAN SMITH & GRACE 1709 TOOLROOM. 17" swing x 40" centres. Inch/metric. TAPER TURNING ATTACHMENT. NEW 1977. EXCELLENT. £9,750.



H.E.S. V100N CNC LATHE 510 mm swing x 1250 mm centres. 26KW motor. G.E. 1050 CNC. NEW 1978. EXCELLENT. £26,000.

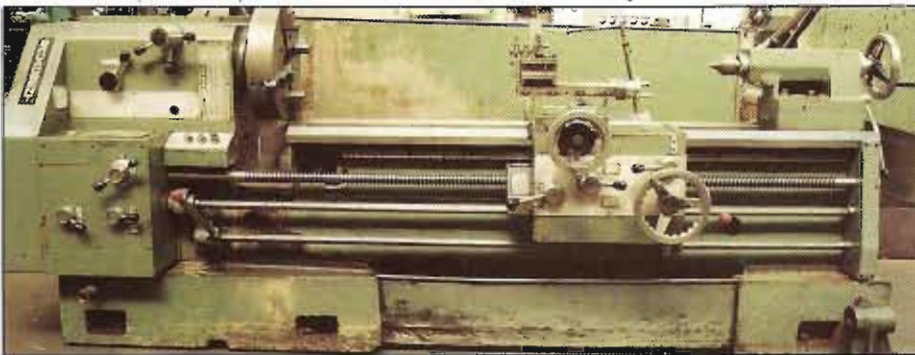
## LATHES — CNC and MANUAL



GILDEMEISTER MDR32-4A N.C. LATHE. Swing 830 mm. 1280 mm turning length. 128 mm spindle. 650 mm chuck. Swarf conveyor. 50 h.p. NEW 1973. SINUMERIK N.C. £14,000.



H.E.S. TRANSUM CNC LATHE. 500 mm swing. 325 mm length. G.E. 1050 C.N.C. NEW 1980. £26,000.



BROADBENT BSX 20 20" x 72" Gap bed. NEW 1970. Excellent. £4,950.



LANG 21D. 22" x 60". Taper Turning. NEW 1964. Excellent. £4,950.

DEAN SMITH & GRACE 25" x 240". Taper Turning. Hardened bed. NEW 1976. Excellent. £22,750



Also available from stock

HARDINGE HLV-H Precision Toolmakers lathe. £2,450.  
HARDINGE DV59 Precision Toolmakers lathe. £1,000.  
COLCHESTER MASCOT — various available — from £2,950.

COLCHESTER MASTER — various available — from £2,450.  
COLCHESTER TRIUMPH — various available — from £2,650.  
NILES DLZ 630/2000 — 25" x 80". Taper Turning. 1968. £5,950.

**PLEASE NOTE** — from our deal in SWEDEN we have several more standard CENTRE LATHES, MAINLY V.D.F., AND STANDARD MILLING MACHINES, HITACHI SEIKI, STARRAG, TOS, BROWN & SHARPE DYNAMASTER, KOPING, HELLER — mainly new post 1970. Send for this separate list — also many other useful items.

## MILLING MACHINES — Vertical and Universal



CINCINNATI 420-16 EDO.  
Power down feed. Superb.  
1974. £9,750.



BRIDGEPORT Series II.  
Variable speed head. Chrome  
slides. Electric feeds +  
DIGIDIALS 1973. £4,250.



H.E.S. CNC HORIZONTAL and  
VERTICAL MILL. GE 1050 CNC  
Choice. £8,000 — £12,000.

SCHAUBLIN SV13 Universal Toolroom Mill. All types of accessories. Superb.	£3,850.
BRIDGEPORT SERIES II. Variable speed head. Chrome slides. 1973.	£3,250.
ACIERA No. 3 Universal Toolroom Mill. Slotting and other equipment. 1969.	£3,950.
ADCOCK & SHIPLEY No. 2S Universal All angle head. 1974.	£4,600.
PARKSON 3V heavy duty Vertical. 70" x 16". 1967.	£4,750.
CINCINNATI 205-12 Vertical. 49" x 12". Power down feed. 1962.	£2,250.
SHIZUOKA VRG Universal. Horizontal + Turret mill head. 1974.	£3,400.
POLMACH FYJ40 heavy duty Vertical. 80" x 22". 17kw. 1978.	£8,500.
GATE PROFITMILL — Turret type Vertical. 40 taper. long power feed.	£2,750.
HERBERT 28A heavy duty Vertical. 84" x 30". 30/20 h.p. 1966.	£4,750.
CINCINNATI TOOLMASTER — Turret Mill. Superb. 1976.	£4,950.

## SHEET METAL MACHINES & POWER PRESSES



EDWARDS TRUECUT Guillotine. 2 m x 3.25 mm. Optical back gauge. 1978 —	£4,750.
EDWARDS TRUEBEND Pressbrake. 40 ton. 2500 mm. Built in light guards. NEW 1980 — 'as new' —	£6,450.
HME OP75. Variable Stroke, inclinable. Power Press. 1973.	£8,250.
RHODES RH 100 Press. Variable Stroke. 1974.	£11,750.

\* We have late model 150/250 ton FINE BLANKING PRESSES.

**WANTED — YOUR SURPLUS MACHINES especially:—**

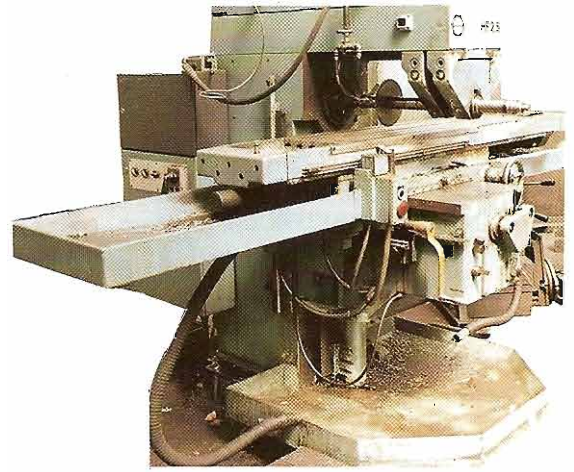
**CNC Lathes and Machining Centres. WICKMAN, BROWN & SHARPE, INDEX, and TORNOS AUTOMATICS ESCOMATICS. CINCINNATI and JONES & SHIPMAN GRINDERS, CINCINNATI, HURON, SCHAUBLIN, DUFOUR, BRIDGEPORT MILLING MACHINES, BRUDERER, HME and RHODES POWER PRESSES. CINCINNATI, ELGA, PROMECAM, SAFAN, STRIPPIT SHEET METAL MACHINES.**

**SINGLE ITEMS OR COMPLETE PLANT PURCHASED.**

## MILLING MACHINES — HORIZONTAL and AUTO CYCLE



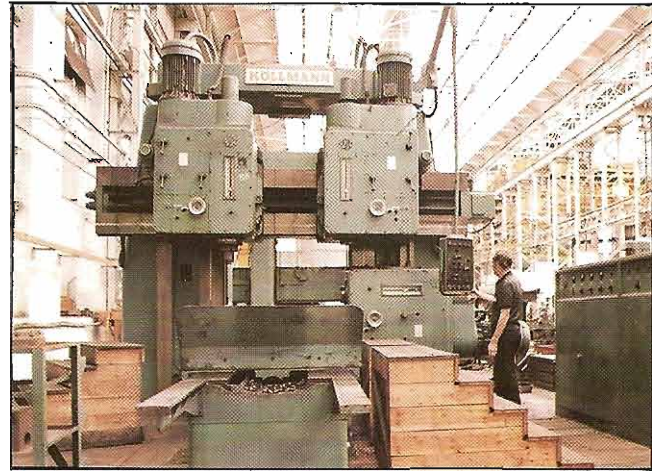
CINCINNATI 500 Series HYPOERMATIC Table 144" x 26". An exceptional machine — from machine tool manufacturers plant. NEW 1970. £23,500.



FRITZWERNER HF2.5 Plain. Table 80" x 14". Speeds 18 — 1800 rpm. NEW 1976. £6,750.



CINCINNATI TOOLMASTER + PROGRAM CONTROL Versatile and productive. 1976. £4,950.



KOLLMAN MCS 63 PLANO MILL. Capacity 168" x 67" x 67" 3 swivel heads. 44kw each head. RIGHT ANGLE HEAD. 1959/79. £39,750.

### also available:—

- CINCINNATI POWERMATIC — Series 100 DUPLEX MILL. 1973. £12,500.  
 ACME AIKARTU. Auto Cycle FH4. With rise & fall & copying. 1979. £6,950.  
 CINCINNATI 210 Plain. EDO Good high speed machine. 1968. £3,750.  
 FRITZ WERNER FH4D. Heavy duty Horizontal. High Speed. £1,500.



ACTON CNC VERTICAL MILL Model 400. Now 1984. £19,500



BOKO FV2 VERTICAL TABLE 42" x 25". 1968. £9,750.

**AT 780 KINGSBURY ROAD, YOU WILL ALSO FIND  
B.L.E. AUTOMOTIVE LTD. — Telephone 021-384 6000**

Our activities include:—

- to build fine cars like  
**THE LISTER JAGUAR XJS (top)**  
**THE B.L.E. JAGUAR XJ6/12 (centre)**  
**THE INVICTA TREDECIM (bottom)**
  
- TO REBUILD CLASSIC CARS and TO PREPARE CARS FOR RACING
  
- TO SERVICE MODERN QUALITY CARS. CRYPTON Computerised DIAGNOSIS 'AT COST' RENTAL RATES of LISTER JAGUAR or B.L.E. JAGUAR while your car is with us for service.
  
- TO BUY and SELL MODERN and CLASSIC QUALITY and PERFORMANCE CARS. CONTACT TIM EXETER or ROGER PARKER for further information.



## The B.L.E. 226 Mile Triathlon by Dr. Chris Stockdale for Charity

In August local G.P. 41 year old Chris Stockdale from Shirley will attempt the most gruelling individual Triathlon.

**1st A Channel Swim**  
20 Miles from Cap Gris Nez to Dover.  
Swimpost: City Centre TAX Planning Limited  
Sole and Pension Specialists.  
Waterloo Road, Wolverhampton

**2nd A Marathon Cycle Ride**  
180 MILES from Dover to Solihull supported by Villa Sevens Holidays, Alcester

**3rd A Marathon Run**  
A 20 Mile full Marathon Cruise starting and finishing at Tudor Range in Solihull. Supported by Exeter Machine Tools (Midlands) Limited, Aston, Birmingham.

- IN MD C#**
- Birmingham Children's Hospital (by Senator Appeal) £5,000.00 already raised
  - East Birmingham Hospital Intensive Therapy Unit
  - Handicap Swimmers Club Tudor Grange - Solihull
  - Solihull Hospital's Orthopaedic Department
  - Middlefield Hospital, Knowle

His previous swimming feats have raised over £50,000 for Charity Appeals. Help him to double this on what has to be his last major effort

### MAIN SPONSORS

B.L.E. Automotive Ltd  
780 Kingsbury Road  
Edington,  
Birmingham B24 9PS  
Telephone: 021-384 6000  
For Classic and Modern Jaguars

**THE RAFFLE PRIZES include:**

- A two week self-catering holiday for two in Gstaad or Mallorens plus £250 spending money
- An 85 minute Champagne Flight in Concorde

**TICKETS 25p each**

Available from:  
Dr Stockdale, 5 Union Road,  
Shirley, West Midlands

You can meet the triathlete at Birmingham's New Street Shopping Centre 1.15pm-5pm July. He will also be at the Jaguar Spectacular (a very interesting day out anyway) at Stafford on Sunday August 11th.

**Please Note:**  
All costs are paid for by sponsors. The Total Fund Raising Activities go to the charities.

## CHARITY APPEAL PLEASE READ

On the left is a small reproduction of the front cover of a leaflet used to promote the activities of Dr. Chris Stockdale on behalf of several very worthwhile charities. He completed successfully the amazing TRIATHLON, a truly tremendous feat of endurance and his appeal looks well set to achieve the hoped for total of £20,000.

THIS CATALOGUE IS GOING TO MORE THAN 30,000 COMPANIES. IF ONLY 10% OF YOU RESPOND AND SEND £5 or £10 IT COULD DOUBLE THE EFFECT OF THIS DOCTORS INCREDIBLE FEAT.

Please send cheque made payable to  
**Dr. CHRIS STOCKDALE (Charity Account),**  
to **B.L.E. AUTOMOTIVE LTD.**  
**780 KINGSBURY ROAD, BIRMINGHAM B24 9PS**

Send it from your petty cash if you are unable to subscribe officially **COME ON! MAKE HIS EFFORTS REALLY PAY.**

Please ask for copy of the full leaflet if you would like one.