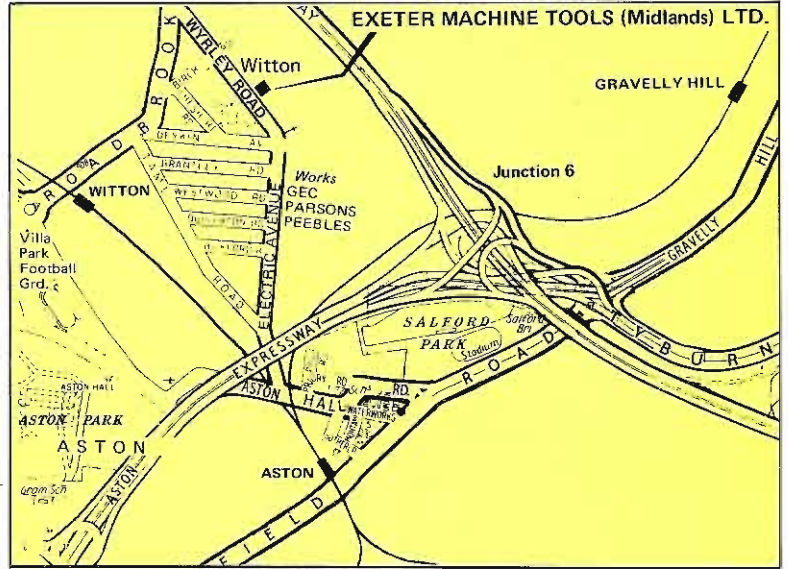


EXETER MACHINE TOOLS (MIDLANDS) LIMITED

WYRLEY ROAD, ASTON, BIRMINGHAM B6 7BN. Tel: 021-328-3636 Telex: 337682 Exmach



IF YOU ARE LOOKING FOR TOP QUALITY USED MACHINE TOOLS – LOOK HERE!



STOCK LIST

CONTACT US FOR:-

MACHINE TOOLS—BUYING OR SELLING
MACHINE TOOL REBUILDING—RECONDITIONING

CNC & NC SERVICING—RETROFITTING
PLANT INSTALLATION—REMOVAL—TRANSPORT

PRESSES—BRAKE PRESSES
GUILLOTINES—FABRICATORS
COIL WINDING MACHINES

PLANT & MACHINERY VALUATIONS
**WE WISH TO BUY MACHINES
SEND US YOUR SURPLUS LIST

AUTOMATICS - MULTISPINDLE - SINGLE SPINDLE

CONOMATIC 9 1/2" x 6 spindle CHUCKING AUTO. NEVER ON PRODUCTION cost £130,304 in 1979	£69,500
WICKMAN 2 1/4" x 6 spindle auto. Fully tooled. Impeccable condition. Swarf Conveyor. (15369). 1975.	£28,000
WICKMAN 2 1/4" x 6 spindle auto. Tooling Good. (15747). 1975.	£21,000
WICKMAN 1" x 6 spindle - Full tooling including PICK UP. Swarf conveyor. Excellent. (16477). 1977	£24,000
WICKMAN 1" x 6S spindle stop, Universal Threading. Pick up and back Deburring. Full tooling (Swarf conveyor). Excellent. 15831. 1976.	£23,000
WICKMAN 1" x 6 spindle - choice of 6 excellent fully tooled machines with swarf conveyor. 15150/14954/14904/15164/14910/14930 - 1973	ea £16,000
Some attachments for above - first come, first served -	NO EXTRA
WICKMAN 1" x 6 spindle with Universal Threading. Pick up and back deburr and full tooling. Excellent. 15602. 1975.	£21,000
WICKMAN 1" x 6 spindle - just as above. 14538. 1972.	£16,500
WICKMAN 1" x 6 spindle - No. 8056. REBUILT - 12 months guarantee.	£19,000
WICKMAN 1 1/4" x 6 spindle. Tooling. New bearings fitted 12 months ago - 6 slides. 1959 but far better than average.	£15,000
WICKMAN 5 3/8" x 6 spindle CHUCKING AUTO. Impeccable machine with 2 chucks. Full tooling including Threading. 1962.	£6,950
WICKMAN 1" x 6 spindle - 2 x 1968 and 1 x 1972. Pickup/Milling/Long turning and other attachments and tooling for selection.	£9,000 - £11,000
Prices	
NATIONAL ACME RA4. 3 1/2" x 4 spindle with Universal Threading. Excellent	£5,000
ACME GRIDLEY RB6. 2 3/8" x 6 spindle. Tooling. Good condition. 1965.	£5,500
WICKMAN 1 1/4" SINGLE SPINDLE Bar Auto. Fully tooled and in excellent condition. New 1968.	£3,500
BSA 88BL Single spindle bar auto. Slotting and Pick up. 1969. 1" capacity. Vertical slide - £2,450. HERBERT 88 AL - 1976.	£3,450
HYDER No. 8 Vertical autos. 4 very well tooled machines in superb condition. 2 & 3 jaw power chucks. Incredibly prices for 1969 machines.	each £5,000 & £6,000
DIEDESHEIM LSA 6 2-way Multi Unit Machines. Send for full details of these superb 1969 machines. 1/6th new price!	
DIEDESHEIM AM11. Three-way Multi Unit Machine. 1963 Fabulous cost saving opportunity.	
MANURHIN DECOMAT 50. High precision Swiss plugboard auto with final copying sequence. Presetting interchangeable turrets. 1974.	£8,000
ESCOMATIC D6R coal fed automatics. 1/2" capacity. 1965-6. Coil holders. Pressurised coolant.	from £3,500
PETERMANN P7/10 Single spindle bar auto. 3 spindle combined attachment fitted with AZUMA magazine barfeed. Perfect 1973 machine	£5,550
PETERMANN P7/10 ditto with Auxiliary Headstock. AZUMA barfeed. 10 mm capacity. 3 1973 machines	ea £3,650
PETERMANN P7/10 ditto with 3 spindle drilling attachment. Standard feed 1973.	ea £4,450
PETERMANN P7/10 ditto with 4 spindle turret. 3 excellent 1966 machines	ea £2,950
PETERMANN P7/10 ditto with 3 spindle combined attachment 1966	£3,650

BORERS - JIG - VERTICAL - HORIZONTAL

SIP (Genevoise) MP2P Precision Jig Borer with vast range equipment including Optical rotary table. Superb 1968 machine.	£8,000
SIP MP3K Double column Jig Borer with PD2 Rotary table. Very cheap because we bought it cheap. No. 583	£2,200
NEWALL 2443 Jig Borer 24" x 43". Full tooling. Sub table - Ferranti D.R.O. 1965	£11,000
NEWALL 1520 JIG BORER. Optical readers (inch/metric). Excellent 1970 machine. Full tooling - Rotary table.	£5,750
DOWNHAM MINI JIG BORER. Table 16" x 7". Traverse 12" x 7". AS NEW.	£1,850
WEBSTER & BENNETT 48" EM (Elevating Rail) Precision vertical borer with HEID electro magnetic copying and full coolant. Chuck jaws & full tooling. 1970.	£22,500
BERTHIEZ Model IH 9330/2 Vertical Borer. 1400 mm dia. table. Elevating rail. Also sidehead. 225 rpm. Excellent.	£16,000
WIEDEMANN Double ended Precision Fine Borer. 2 spindle heads one end, single the other. Auto cycle cross traverse table. Superb 1974 machine.	£

CAPSTANS AND TURRETS

HERBERT 2D 1 1/2" collect capacity. Full tooling. Excellent. 1965	£1,950
HERBERT 4 Senior Preop Monoslide. Collets, chuck, tooling 1968	£3,000
HERBERT 12B Turret lathe. Heavy duty. 32" swing. 5-640 rpm. 6 1/2" spindle. Screw cutting. 35 hp. 1963.	£7,500
WARD 2DB Capstan with collect chuck, barfeed and tooling. 1973.	£4,250
WARD 3DB Capstan. Collet chuck & full tooling. Superb 1974	£5,650
WARD 7DS Capstan lathe with collect chuck bar feed and full tooling. 1973	£2,950
HARDINGE HCT and HC Precision Turret Lathes. 4 excellent machines	from £2,250

DRILLING MACHINES

BURGMASER 2B automatic indexing and hydraulic feed TURRET DRILLS 1974	£3,250
LOCH Model TB 300 DEEP HOLE DRILLING MACHINE. Double ended Machine. Full AUTO CYCLE. LATE MODEL. IMPECCABLE	£19,950
ARCHDALE 4'6" 5 Morse taper Radial Drill. Box table. 22-580 rpm. Spindle brake.	£2,950
ARBOGA ER125S Radial. 200-3600 rpm. As new.	£1,650
ARCHDALE 5'0. Radial. 5 M.T. 60-1500 rpm. Box table. 1952 but actually excellent.	£2,950
HERBERT 6 spindle type 'V' (pole change motor). Deep throat machines. Full specification. 1970 - 6 spindles for price of 1. Other 6 & 4 spindle drills in stock - please enquire	£2,500

GEARCUTTING AND GEARGRINDING MACHINES

MODUL ZFWZ 250 x 5/11a Universal Hobber. 250 mm dia x 5 d.p. Excellent. 1969 machine	£5,950
PFAUTER P900 Universal & Production Gear hobber. 36" dia. x 2 1/2 d.p. Available very shortly. 1962.	£17,500
SYKES H160 Precision Production Horizontal Gear hobber in really excellent condition. 1977	£9950
LEES BRADNER 7HD. Production Vertical Gear hobbars. 8" dia. x 4 d.p. 20" hob traverse. 1969. Superb.	£3,950
CHURCHILL RH8 RIGIDHOBBERS. 8" dia. x 4 d.p. Range of excellent 1965-1970 machines.	£3,000-£4,000
CHURCHILL PH1612 Heavy Duty High Production Hobber. 16" dia. 3d.p. 1965.	£5,000
STAEHELLY SH510 Universal Gear Hobber. 22" dia x 3 d.p. 1962	£8,500
CHURCHILL GS8FA Universal 8" SHAVER with CROWNING. 1969. Universal high production machine in very good condition.	£4,900
REDRING PGCA/10 Automatic Gear Chamferer. 1969. Send for full details of this excellent machine	£3,500
SYKES VS18 SHAVER. 18" dia x 4 d.p. Fully reconditions	£3,450
HERBERT FELLOWES 7125A. Precision 7" Gear Shaper. Runs superbly. Modern	£1,350
FELLOWES 6A 18" dia. Gear Shapers. Several of these popular machines. Condition good - excellent.	£2,000-£3,950
MAXICUT 3A 18" Gear Shapers. 1 with Riser Block. Very good and well equipped machines.	£3,750-£
SUNDERLAND No 5 GEAR PLANNER. Spur and Helicals	£2,000
GLEASON 950 HYPOID BEVEL PRODUCTION CENTRE - see photo back cover. Magnificent group of machines, now 1974, excellent condition. Available at fraction of cost. Can be split and sold individually. Your chance to buy the best - Gleason - at ordinary machine prices. Send for full details	

GRINDING MACHINES

HAUSER 3SMO Optical Jig Grinder 16" x 10". Rotary Table. Slot Grinding. Many more accessories. Superb. 1969.	£17,500
CINCINNATI HEALD 271B Sizematic INTERNAL. Autocycle. Superb. 1973. 18" diameter capacity.	£10,750
HEALD 271 Sizematic Internal Grinder. Up to 8" dia. hole, 18" dia swing. Excellent. 1969.	£3,500
BSA CHURCHILL HBY Universal, short run. Internal Grinder. 19" swing. 24" traverse. 1965.	£2,500
OVERBECK Internal Grinder. Type Zo.20. High Precision. 1963.	£800
HEALD 171B Sizematic Auto Cycle INTERNAL GRINDER. 1969	£3,500
VOUMARD 32 ACH INTERNAL. With several spindle heads. 3" dia. capacity. 1969.	£6,950
CLICHY 10" x 2 1/8" UNIVERSAL. Very high quality. FULLY EQUIPPED. 'As New'. You need the full spec to appreciate the qualities.	£12,500
JONES & SHIPMAN 1300 EIT. 10" x 27" Universal with double swivel wheelslide. Well equipped and excellent for 1961.	£3,750
JONES & SHIPMAN. Model 1049. Plain Cylindrical. 1965.	£2,000
MYFORD HA UNIVERSAL INTERNAL Attachment. 1970. 5" x 12". Excellent.	£4,500
MYFORD MG12 Plain Cylindrical Grinder. 5" x 12".	£1,200
JONES & SHIPMAN 1070 Cylindrical Grinder. INTERNAL attachment. 1970. 5" x 12". Well equipped and excellent condition	£4,000
JONES & SHIPMAN 1310 UNIVERSAL INTERNAL Attachment. 1960. 8" x 18".	£3,250
JONES & SHIPMAN 1311 EIT Universal with double swivel wheelslide. Fully equipped. Superb. 1967.	£4,950
JONES & SHIPMAN 310 Tool & Cutter Grinder. Very extensive equipment. 1965.	£1,950
CINCINNATI No. 2 Tool & Cutter Grinder. 1965. (£2,950) 1954 (£1,400), No 1 T & C 1963 (£1,250)	
CINCINNATI CENTRELESS. Choice of more than 25 Models 20M and 220-8. Send for list.	
ASTRA Tool & Cutter Grinder - very fully equipped. 1976.	£500
MALCUS MC40 CENTRELESS 3 1/2" diameter capacity. 1966.	£4,000
MATRIX THOMPSON CT11 True Forming and Creep Feed Surface Grinder. 36 x 12 mag. chuck. IMPECCABLE 1972.	£19,500
JONES & SHIPMAN 1400P. Power rise & fall. Well equipped. 1962 but EXCELLENT.	£3,250
BLOHM HF6 24" x 10" Surface Grinder. Magnetic chuck. 1956.	£1,800
JONES & SHIPMAN 540. 18" x 6". Fully equipped. Although 1970 - for genuine reasons this is 'as new'.	£3,750
ZOCCA RPAT 1550 Surface Grinder with Horizontal and Vertical Spindles. 24 x 8. 1968.	£1,600
PETEWE Optical Profile Grinder with Circular form tool grinding attachment.	£3,350
WMW Optical Profile Grinder (takes WICKMAN wheels). With Circular form tool grinding.	£2,950
LUMSDEN 93ML Vertical Spindle Surface Grinder with 60" dia. magnetic chuck - Excellent 1970 machine.	£17,750
LUMSDEN 90ML 24" (dia. magnetic chuck) Vertical Spindle. Surface Grinder. 1968.	£4,950
CHRISTEN 2-32 Drill point Grinder. 1969.	£1,650
SNOW 15" Rotary Table Surface Grinder. Tilting Table. 1964.	£1,100
Matrix No 16 Universal Tap & Thread Grinders	£4,500
CHURCHILL 18 x 6 Horizontal Spindle Surface Grinder with magnetic chuck, 1960	£1,200

TRY EXETER MACHINE TOOLS FOR THOSE 'HARD TO FIND' MACHINES

Exeter Machine Tools recently supplied these machines to companies who had been searching for quite some time. Let us have your enquiries.

Maybe it is a customer you need for a 'hard to place' machine. We work very hard at finding customers for good but rather out of the ordinary machines. Can we help you to place such a machine?

Top. SIP6A Hydroptic Jig Borer to UK customer not wishing to pay new price but wanting absolute top quality.



Middle. LIEBHERR 100 inch Gear Hobber to UK customer urgently requiring this large machine to fulfil contractual obligations.

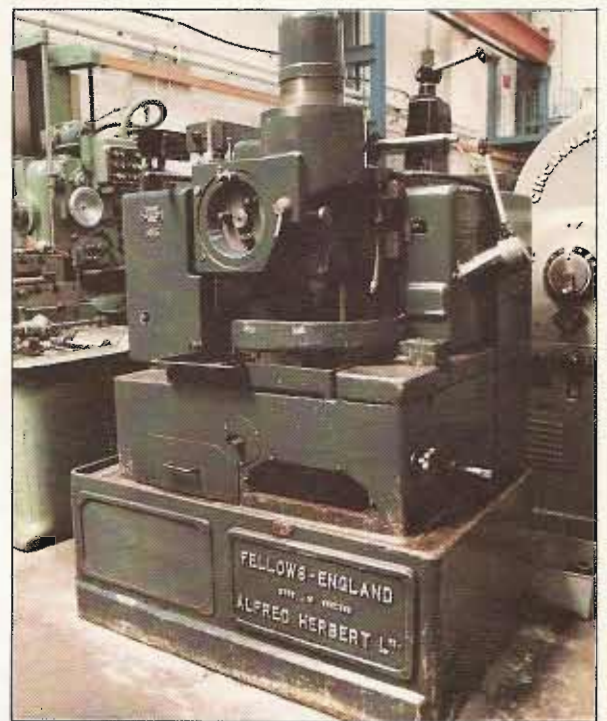


Bottom. KARSTENS Angle Approach Grinder bought new by UK company in 1979 but almost instantly surplus to requirements. Agents tried to sell at MACH '80 without success. It took us nearly 12 months but we found a customer in Canada and the machine is on its way.





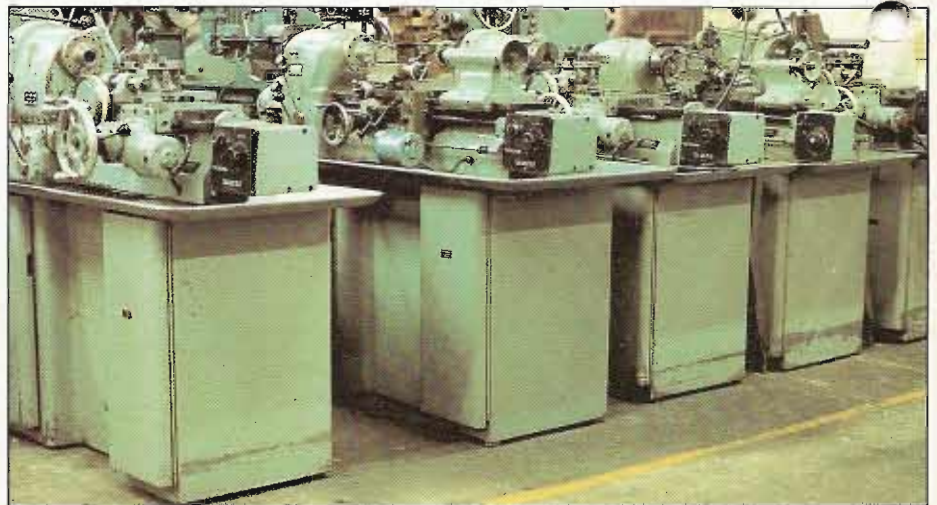
Range of 1971 CVA K & T 50 & 25 ton Presses Var/stroke



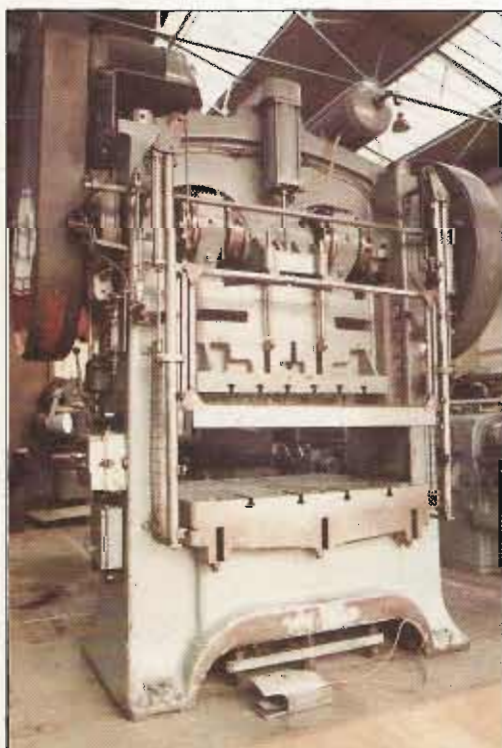
FELLOWS 7125A GEAR SHIFTER



1974 WARD 3DB Capstan Lathe



Range of HARDINGE Precision Lathes



1968 HME DC6 Press. Var/stroke



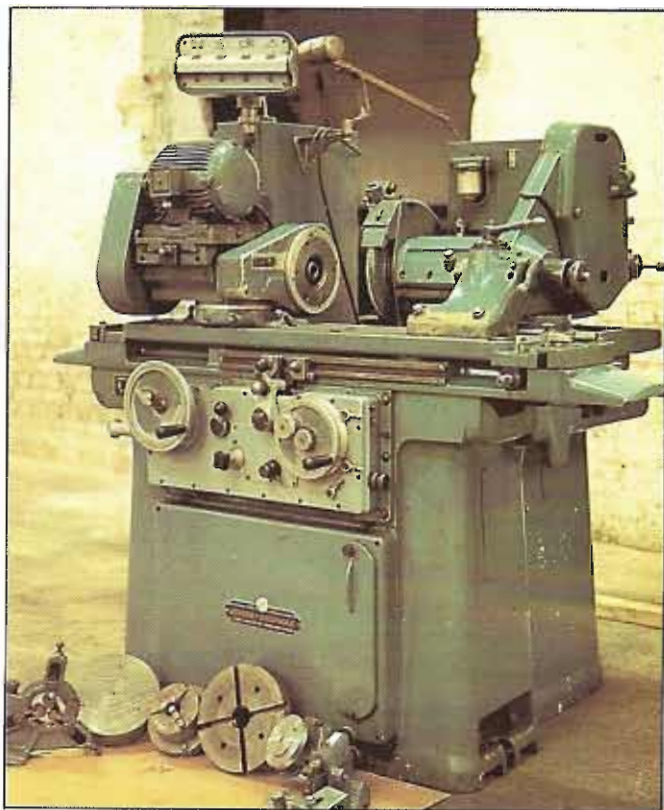
1975 BENTLEY M80 PRESS



1969 RYDER 8 VERTICAL AUTO



1965 CINCINNATI Rise & Fall Powermatic



1967 JONES & SHIPMAN 1311 Universal Grinder



1973 PETERMANN P7/10 automatics



1974 CINCINNATI HEALD 271 Internal Grinder



JONES & SHIPMAN 1070 Universal Grinder



1973 WARD 2 DB Capstan Lathe



MATRIX 16 Universal Thread Grinder



HAUSER 3 SMO JIG GRINDER



1968 SIP Model MP2P JIG BORER



1963 MAHO MH800 Tool Mill



1965 CINCINNATI 2 Tool & Cutter Grinder



1970 CINCINNATI 100-122 Powermatic Mill



1970 RHODES RF 75 Press



1975 STARTRITE 20RWS BANDSAW



1969 LEES BRADNER 7HD Gear hobber



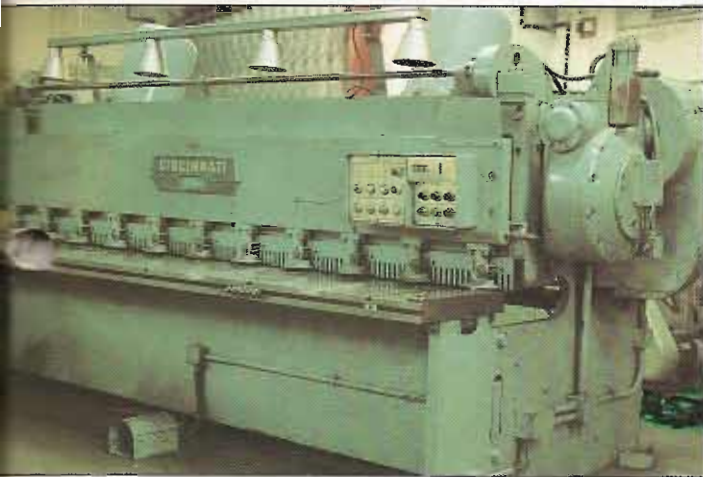
1974

WIEDMANN Double end Fine Borer. Auto x table



1979

TRANSCO AUDREMA 2nd Op Twin chucker



CINCINNATI 1410 Autoshear 10' x 3/16"



ELGA 818 Hydrashear



BUTLER 550 & MISAL 819 Centre Lathes



J&S 540 - MYFORD HA12 - HOFMANN Balancer



ISOMA M117A Projectors - Turret lens 100/50/20



T.T.H. Engraver - DOWNHAM MINI BORER - ASTRA Cutter Grinder



1978 ADCOCK & SHIPLEY Continuous Path N.C. Mill



1970 CINTIMATIC 4H-1500 N.C. Horizontal Mill



JIG BORERS 1970 NEWALL 1520 and 1965 2442 +D.R.O.



197 FERRANTI Inspection Machine with Computer



1969 FERRANTI Inspection Machine. WMW Optical Profile Grinder



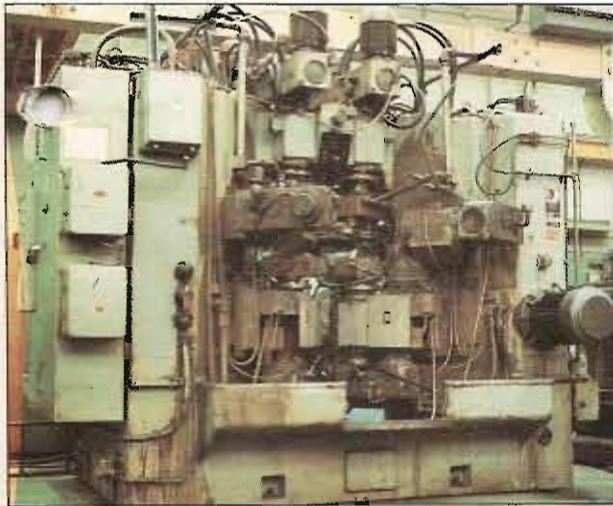
1979 CONOMATIC 9 1/2 x 6 spindle Auto, 1/2 price.



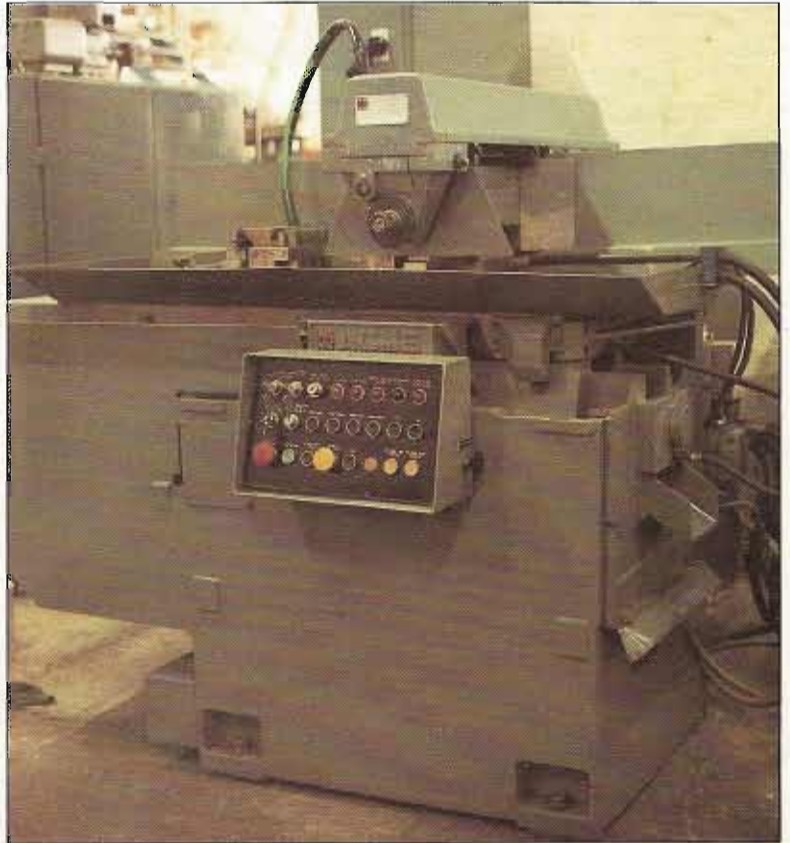
1969 ROUCHAUD Rise & Fall Mill.
Fitted with N.C. controlled rotary indexing table.
Very high quality machine. Full specification on request.



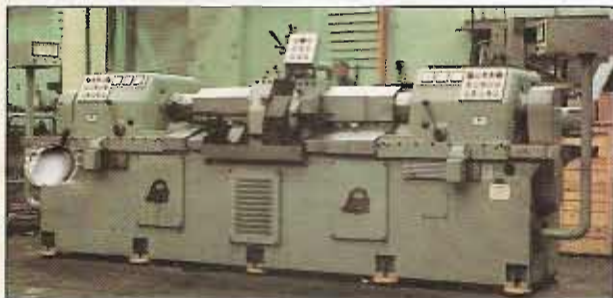
1972 MATRIX-THOMPSON CT11 Truforming & Creep feed Grinder
Capacity 36" x 12" (magnetic chuck) x 16" under wheel.
20 hp. wheel head.



DIEDESHEIM AM II AUTOMATIC MULTI UNIT MACHINES



1979 ACME (Rise & Fall) Auto Cycle MILL with DUPLOMATIC COPYING



LOCH TB300 Auto Cycle DEEP HOLE DRILLING MACHINE



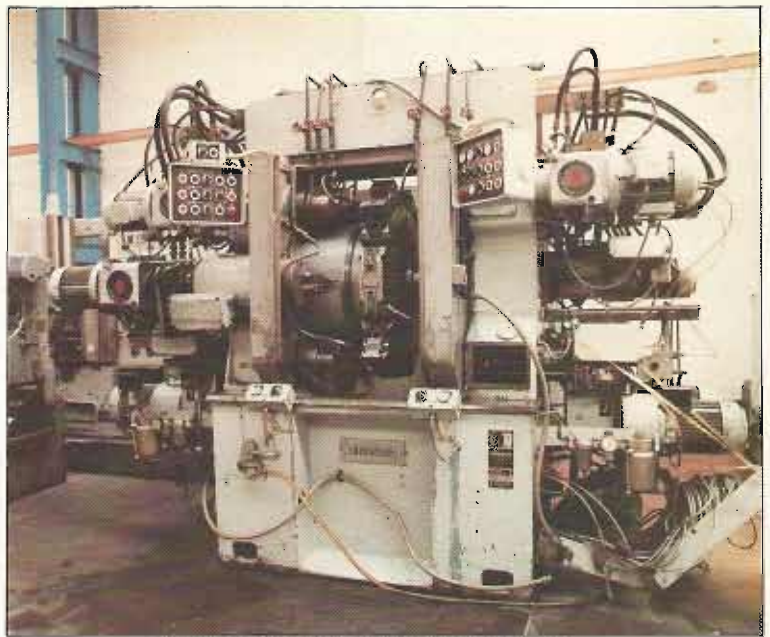
'As New' CLICHY Universal Grinder



1973 TOS W100 4" Horizontal Borer - Optical



1970 LUMSDEN 93ML 60" GRINDER



1969 DIEDESHEIM LSA Multi Unit Machine



1974 WICKMAN 2 1/4 x 6 spindle Auto



1970 Q & S PNC N.C. Bridge type Drill



1970 BEAVER Twinhead Mill



1975 RHODES RH80 Press



1970 WEBSTER BENNETT 48"EM

INSPECTION MACHINES

FERRANTI 3 axis INSPECTION MACHINE, Inch/Metric, Full equipped, Excellent, Model 75 (£5,500) plus another with computer and tapewriter.	£6,500
ISOMA M117A Shadowgraphs, 3 lens turret, Micrometer workstage, Fully equipped, Choice of several	£550-£950
HOFFMANN Electronic Balancing Machine especially for grinding wheels for worms and rollers	£1,950
LATHES	
HARDINGE HLV Precision toolroom lathe, 5½" x 18", 3000 rpm, Late, Excellent.	£1,850
MISAL (BINNS & BERRY) Model 819 — 20" swing x 10' centres, Excellent, 1975.	£6,250
HARDING DV59, Precision lathe, Cabinet base, Full tooling/collets, 1973.	£2,000
COLCHESTER CHIPMASTER 10" swing, Precision lathe, Full tooling, 1970.	£1,000
LANG Toolroom lathe with TAPER TURNING, 13" diameter x 36" centres, Full tooling, 1960.	£975
GALLICOP 16" x 30" Universal 6 cycle Copy lathe, Full screwcutting, 1970.	£4,000

MILLING MACHINES

DECKEL KF12 DIE SINKER, Several important attachments, In truly immaculate condition.	£8,500
TTH Engraver, Very modern with stainless steel attachment & sets of letters, Immaculate	£800
BEAVER Turret Mill — 2 heads on common slide, 1970.	£1,350
BEAVERMIL Turret Mill, Power table, Height extension.	£1,100
ADCOCK & SHIPLEY 2AGU Universal Mill, Sturdy, simple, reliable.	£850
TOS FA5H heavy duty horizontal mill, 1967.	£1,750
CINCINNATI 205-12M1 Vertical Mill, 1969.	£2,450
DUFOUR 69 high precision Universal, 51" x 12", Traverses 34" x 11" x 21", Superb machine with superb equipment, Eng/metric dials, Perfect	£5,750
CINCINNATI 205-12 M1 Vertical, Power down feed to head, Very good, 1962.	£3,950
CINCINNATI 100-122 Powermatic Auto Cycle Horizontal, Impeccable, 24" traverse, 54" x 12", 1970.	£6,950
CINCINNATI 105-122 Powermatic Auto Cycle Horizontal, Power Rise & Fall, 1965.	£8,850
CINCINNATI 207-12 Horizontal Mill, 60" x 12" table, 1485 rpm, 1963.	£2,950
CINCINNATI 1-18 Auto Cycle Horizontal Mills, Several good and late machines, 1955-1962.	£750-£2,000
KEARNEY & TRECKER 1218 Auto Cycle Horizontal Mills, 42" x 12", 18" traverse, Several 1964.	£950-£1,750
KEARNEY & TRECKER 1224 Auto Cycle Horizontal Mill, Auto rise and fall cycle, 48" x 12", 24" traverse, 1974.	£4,950
LAGUN Universal Mill, 63" x 14" 50 taper, Vertical head, 1965, heavy duty vice.	£2,950
ARNO Universal Mill, 42" x 10", Fitted Universal Milling head, 1967, Model 1A.	£2,450
DUFOUR No 51 Universal Mill with Vertical Attachment, 42" x 10".	£1,950
CENDEC Mk III Auto Cycle Mill, 1970.	£750
MAHO MH800 Universal Tool & Die Mill with Tilt/Swivel table, 1963, 40 taper.	£4,000
ACME AKARTU FH4 Auto Cycle Horizontal Mill with HYDRAULIC COPYING (Diplomatic) and auto cycle rise and fall to headstock, Table 45" x 10", Cost £17,000 plus in 1979, Perfect, Send for full details.	£6,950
ROUCHAUD FH90CS Auto rise & fall horizontal spindle mill, 36" traverse, With N.C. controlled indexing rotary table.	£12,000
Send for full spec, 1969.	
CINCINNATI 100-121-5 Powermatics, Several 1966 m/cs.	Each £2,750

NUMERICAL CONTROL

(all machines can be viewed under power. We can retrofit new systems if required) Send for full details.

HERBERT DE Vlieg 4K-72 N.C. Jig Mill, Datarol Mk III N.C. 1974, Full details on request, EXCEPTIONAL OPPORTUNITY... with guarantee	£75,000
CINCINNATI 4H-1500 Horizontal Machining Centre, Accramatic 330 NC 1970, Ex Cincinnati factory.	£12,500
CINCINNATI 3H-1000 Horizontal Machining Centre, Accramatic 8 NC 1972.	£8,500
MOOG MC1000 Hydropoint VERTICAL MACHINING CENTRES with 24 station Auto Tool Changers.	1971 — £4,250
JAMESON N.C. Co-ordinate Vertical Borer, Traverses 87" x 120", You must send for full spec.	£10,500
D & S PNC Coordinate Vertical Driller with 70" x 30" table, 1970.	£4,950
ADCOCK AND SHIPLEY N.C. Turret Mill, Continuous Path, Perfect, 1978.	£7,750
WHITE BSA 50/160 CNC Bar and Chucking Lathes, 12 tool station 25 HP, New 1979, Impeccable, Fantastic cost of saving.	£33,000
HERBERT BSA BATCHMATIC 50/2, 2" Bar CNC Lathe, Full tooling, Superb value, 1975.	£12,500
VERO N.C. TURRET DRILLS with Milling feeds, with AIRMEC AUTOSSET N410 N.C. 1968.	£4,000
VERO 20/40 L1000 Vertical Machining Centre.	£6,500
REMEMBER — WE SERVICE N.C. as well as selling it.	

PRESSES and SHEET METAL MACHINES

HME DCP6 150 Ton Double Crank Press with Variable Stroke 1"–6", 32 spm, 1968 but genuinely in excellent condition, Cushion.	£16,500
HME DCP5 — similar and from same excellent factory, Cushion.	£9,500
DANSK 100 ton, 32" x 24" bed, 8–120 mm stroke, 90 spm, Die cushion, Roll feed, 1961.	£6,750
RHODES RH80, Variable Stroke, 1"–5". Variable speed, Fitted (almost new) BHP Double Roll Feed, 1975.	£8,950
RHODES RH (Wide bed), Open fronted 75 ton Press, 60" x 18" bed, Air clutch, 1974.	£6,250
BENTLEY M80 ton Open front presses, 1"–5" stroke, 38" x 24" bed, 1975 — Superb.	£8,750
BENTLEY G80 open fronted, variable stroke, geared press, Excellent condition for older machine.	£3,950
K & T-C.V.A. 50 ton high speed Dieing Press with Double Roll feed, VARIABLE Stroke, Speeds 125–300 spm, 1971.	£3,500
K & T-C.V.A. 25 ton high speed Dieing Press with double roll feed, Variable stroke 1½"–2½", Speeds 85–350 spm, 1971.	£2,500
RHODES RF75 Open fronted, inclinable, VARIABLE STROKE PRESS, Udal guards, Excellent, 1970.	£7,750
RHODES RF55 Open fronted, inclinable, VARIABLE STROKE, Guarded, Hardly used, AS NEW, 1978.	£5,500
CINCINNATI 1410 AUTO CYCLE Guillotine Shears, 10' x 3/16", Superb, 1968.	£14,000
ELGA 814 HYDRASHEAR, 8' x 1/4" guillotine with powerback gauges, 1974.	£5,850

VARIOUS (Including FORK TRUCKS)

WICKSTEED Power Saw, 8" heavy duty, 1976.	£1,100
STARTRITE 20RWS, Toolroom Vertical Bandsaw, 1975 but 'as new'.	£1,150
TRANSCO AUDREMA 8032/D Two Spindle Chucking Auto, used for form turning on COLD HEADED Items, 1979.	£12,000
APOLLO WINTER type T CIRCULAR SAW, High precision cutting, Vice 400 mm x 250 mm, Blades 250/300/325 mm, As new.	£1,200
VOLKSWAGEN DROPSIDES TRUCK, 2000 cc, 3 tons capacity, Dec, 1979.	POA

Your contacts — Selling/Buying are
 IAIN EXETER, BARRY ELLIS, ALLAN SCOTT, SHONA MACDONALD
 021 328 3636 for details

Please return coupon to
**EXETER MACHINE TOOLS
 (MIDLANDS) LTD.**
 Wyrley Road, Aston,
 BIRMINGHAM B6 7BN

having ticked appropriate boxes
***DON'T FORGET, CONTACT
 US IF YOU HAVE MACHINE
 TOOLS FOR SALE***

My name Position

Company

Address

Put our company on your regular mailing list

We are looking for We have for sale

Send me your fully illustrated 12 page stock list

TRY US FOR THE UNUSUAL MACHINE ALSO



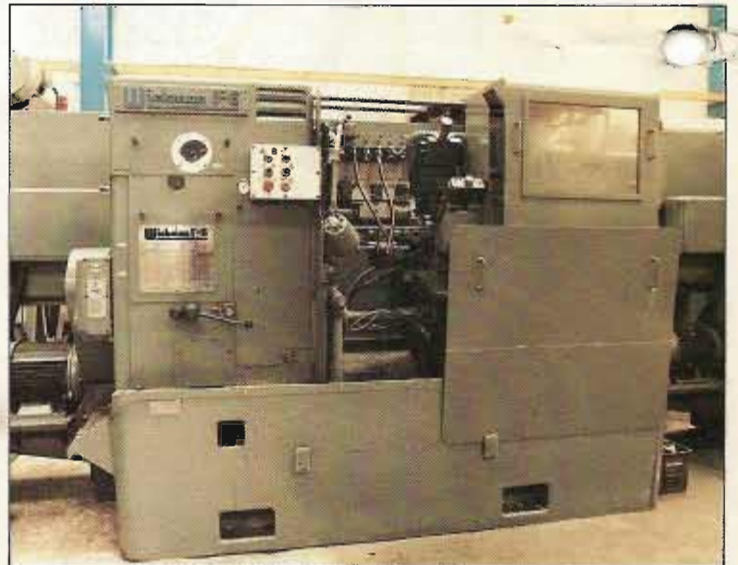
1974 DE Vlieg 4K-72 N.C. JIG MILL



1977 SYKES H160 GEAR HOBBER



1979 WHITE BSA 50/2 CNC Batchmatic



1977 WICKMAN 1" x 6 spindle bar auto



1974 GLEASON HYPOID BEVEL MANUFACTURING GROUP



DECKEL KF12 DIESINKER

YOUR CONTACTS ARE:-

MACHINE SALES & PURCHASE – IAIN EXETER, BARRY ELLIS, ALLAN SCOTT , SHONA MacDONALD

CNC SERVICE – DAVID NORRIS

PLANT REMOVALS – DAVID JENKINS

