

MACHINE TOOL BUYERS & SELLERS PLEASE NOTE! — from MARCH 15th 1982

**EXETER MACHINE TOOLS (MIDLANDS) LIMITED**



WYRLEY ROAD, ASTON  
BIRMINGHAM, B6  
Tel: 021 328 3636 Telex: 337682 Exmach  
½ mile M6 Junction 6 (Spaghetti Junction)  
*Contact: Iain Exeter, Barry Ellis, John McIntyre*

**EXTENSIVE STOCKS OF USED MACHINE TOOLS**



Unused 1979 CONOMATIC 9½ x 6 spindle CHUCKING AUTO—½ price



VOUMARD 52A Autocycle INTERNAL & FACING GRINDER



CINCINNATI 1410 AUTOSHEAR 10' x 3/16"



CINCINNATI Series 5 x 10 Autocycle Press Brake



FRITZ WERNER FV3 VERTICAL MILL



HAUSER 3 SMO JIG GRINDER



SIP Model MP2P JIG BORER

**CONTACT US FOR:-**

MACHINE TOOLS—BUYING OR  
SELLING  
MACHINE TOOL REBUILDING—  
RECONDITIONING

CNC & NC SERVICING—  
RETROFITTING  
PLANT INSTALLATION—  
REMOVAL—TRANSPORT

PRESSES—BRAKE PRESSES  
GUILLOTINES—FABRICATORS  
COIL WINDING MACHINES

PLANT & MACHINERY  
VALUATIONS  
*\*WE WISH TO BUY MACHINES  
\*SEND US YOUR SURPLUS LIST*

**AUTOMATICS – MULTISPINDLE – SINGLE SPINDLE**

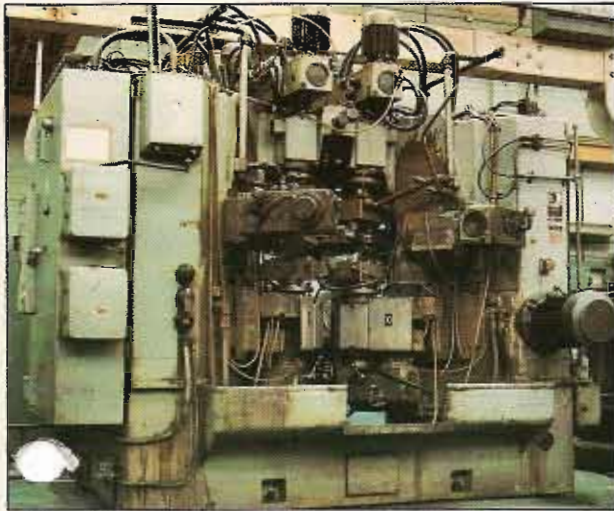
CONDOMATIC 9 1/2" x 6 spindle CHUCKING AUTO. NEVER ON PRODUCTION. Cost £130,304 in 1979.	£69,500
WICKMAN 1" x 6 spindle bar auto. with Synchronous Pick up attachment. Excellent tooling. Very little used although 1962.	£12,750
WICKMAN 1 1/2" x 6 spindle bar auto. 1959	£17,000
WICKMAN 5 1/2" x 6 spindle CHUCKING AUTO. Impeccable machines with 2 & 3 jaw chucks	£6,950
BSA 98AL Single spindle bar auto. Good tooling and condition. 1 1/2" capacity. Vertical slide.	£1,100
BSA 168AL Single spindle bar auto. Eccentric. Slotting and pick up. Vertical slide.	£1,600
BSA 88BL Single spindle bar auto. Slotting and Pick up. 1969. 1" capacity. Vertical slide.	£2,950
BSA 68 Single spindle bar auto. Vertical slide. 1951. 3/4" capacity.	£400
INDEX 52 Single spindle bar auto. 2" capacity. Full tooling. Vertical slide.	£1,950
TRAUB TE 8 station rotary transfer machine. Coil fed. Hydraulic straightener. 1976	
ESCOMATIC DGB coil fed automatics. Some with threading turrets. 1/2" capacity. 1965-6.	from £3,500
PETERMANN P7/10 Single spindle bar auto. 3 spindle combined attachment fitted with AZUMA magazine barfeed. Perfect 1973 machine	£5,550
PETERMANN P7/10 ditto with Auxiliary Headstock, AZUMA barfeed. 10 mm capacity. 3 1973 machines	ea £3,650
PETERMANN P7/10 ditto with 3 spindle drilling attachment. Standard feed 1973	ea £4,450
PETERMANN P7/10 ditto with 4 spindle turret. 3 excellent 1966 machines	ea £2,950
PETERMANN P7/10 ditto with 3 spindle combined attachment 1966	£3,650
EMI-MEC Series ESE 1" Auto Sprint. 2 excellent 1975 machines	ea £4,250
HERBERT AUTO FLASHCAP with Quadrachuck. Late model Excellent 1969.	£4,250
TAREX TE2 2nd op high speed finishing auto. 1972	£3,000
CHURCHILL CA9-10 Single spindle chucking auto. + 60 mm barfeed attachment. Very extensive tooling. 1969.	£7,750
HERBERT 2D Autorobot – excellent and loaded with air op tooling. 1 1/2" collet capacity.	£1,250
MONFORT DA400 16" chucking auto. Powerful machine in very good condition.	£2,000
More autos (including WARNER WASEY 3AC Chucking auto.) in stock shortly plus several SWARF SEPARATORS. Please enquire.	
<b>BORERS – JIG – VERTICAL – HORIZONTAL</b>	
MOORE (USA) Model 1 1/2B Precision Jig borer. Superb 1972 machine. Rotary table. Capacity 19" x 10".	£9,000
SIP (Genevoise) MP2P Precision Jig Borer with vast range equipment including Optical rotary table. Superb 1968 machine.	£8,000
SIP MP5B Jig borer with Tilting Rotary Table.	
NEWALL 2443 Jig borer. 24" x 43". SIP Tilting Rotary Table. D.R.O.	£11,000
NEWALL 1520 JIG BORER. Optical readers (inch/metric). Excellent 1970 machine.	£5,100
DOWNHAM MINI JIG BORER. Table 16" x 7". Traverse 12" x 7". AS NEW	£1,850
DE VLIEG 4B HORIZONTAL JIG MILL. Extensively reconditioned. D.R.O. fitted.	£12,000
BERTHIEZ VERTICAL BORER with displaceable table – 2800mm. Swing 6000mm.	£65,000
STANKO 1516 VERTICAL BORER. 56" table. 64" swing. 200 rpm. D.R.O. Mimik tracing. 1974.	£16,500
TOS W100 wide bed horizontal borer. OPTICS. Superb 1973 machine. 1100 mm x 1100 mm rotating table.	£21,000
Kearns 451F wide bed borer. No travelling spindle. 1968. Table 36" x 36". Cross traverse table.	£3,850
MILNES Precision horizontal production fine borer. Co-ord. table.	£1,000
<b>CAPSTANS AND TURRETS</b>	
HERBERT 2D 1 1/2" collect capacity. Full tooling. Excellent. 1965	£1,950
HERBERT 4 Senior Preop Monoslide. Collets, chuck, tooling. 1968	£3,000
HERBERT 5 Senior Preoptive. Screwcutting to turret and saddle. 1959	£1,850
HERBERT 5 Preoptive Monoslide with HEPWORTH Auto Control. 1975	£7,000
HERBERT 7 Preoptive turret lathe. Excellent 1967. Full tooling	£2,650
HERBERT 9C Turret lathe with full tooling. 1965	£2,000
WARD 2DB Capstan with collet chuck, barfeed and tooling. 1973.	£4,250
WARD 3DB Capstan. Collet chuck & full tooling. Superb 1974.	£5,650
WARD 7DS Capstan lathe with collet chuck barfeed and full tooling. 1973	£2,950
WARD 7D Prelector turret lathe. Taper turning. Collets. Excellent. 1966	£2,650
HARDINGE HCT and HC Precision Turret Lathes. 4 excellent machines	from £2,250
Several WARD 8 & 10 & 10/13 turret lathes all fully tooled.	£600 to £2,500
<b>DRILLING MACHINES</b>	
We always have a wide range of HERBERT and POLLARD 1-2-3-4 & 6 spindle drills. Prices are very favourable to the buyer at this time. Please enquire.	
BURGMASER Model ID 6 spindle Turret Drill. 5" in M.S. EXCELLENT	£1,400
BURGMASER 2B automatic indexing and hydraulic feed TURRET DRILLS 1974	£3,250
LOCH Model TB 300 DEEP HOLE DRILLING MACHINE. Double ended Machine. Full AUTO CYCLE. LATE MODEL. IMPECCABLE	£19,950
POLLARD 2NY light duty toolroom radial. Excellent 1974 machine	£1,250
ARCHDALE 46" 5 Morse taper Radial Drill. Box table	£2,950
ASQUITH OD2 Radial Drill. 7" radius. Box table	£3,750
ALDELL 2 spindle drills. High speed (625/3000 rpm) + Powerfeeds. 1967.	
<b>GEARCUTTING AND GEARGRINDING MACHINES</b>	
MODUL ZFWZ 250 x 5/11a Universal Hobber. 250 mm dia x 5 d.p. Excellent 1969 machine.	£5,950
MIKRON 132-02 Semi automatic Hobber. 4" dia x 12 d.p. Excellent 1969.	£4,500
DOWDING & DOLL H7 Horizontal Hobber. Also suitable splines. 7" dia x 19" length x 8 d.p.	£1,650
STAEHEL Y SH510 Universal Gear Hobber. 22" dia x 3 d.p. 1962	£8,500
CHURCHILL GS8FA Universal 8" SHAVER with CROWNING. 1969.	£4,900
REDRING PGCA-10 Automatic Gear Chamferer. 1969.	£3,500
SYKES VS18 SHAVER. 18" dia x 4 d.p. Fully reconditioned	£3,450
GLEASON 12" Straight Bevel Generators – several – cheap	
GLEASON 2A Straight Bevel CONIFLEX & No. 2 HYPOIDS – with full equipment	
<b>VERY SPECIAL OPPORTUNITIES – due in stock shortly</b>	
A – PFAUTER P900 Universal HOBBER. 36" dia. x 2 1/2 d.p. 1962	
B – REISHAUER NZA GEAR GRINDER – hardly used – the best condition and most fully equipped we have ever seen with DAVID BROWN No 18 Involute and HELIX TESTER and HOPFMANN Wheel balancing machine.	
C – MATRIX No 16 Universal THREAD GRINDER – hardly used – the best condition and most fully equipped MATRIX we have seen	
SYKES V10 Gear Generator fitted with RACK CUTTING ATTACHMENT	£1,250
SUNDERLAND No 5 GEAR PLANER Spur and Helicals	£2,500
<b>GRINDING MACHINES</b>	
HAUSER 3SMO Optical Jig Grinder 16" x 10" Rotary Table. Slot Grinding. Many more accessories. Superb. 1969.	£17,500
CINCINNATI HEALD 271 Sizematic INTERNAL Autocycle. Superb. 1973. 18" diameter capacity	£10,750
VOUMARD 52 A Ultra high precision Production INTERNAL with Auto Facing Attachment Superb. 1974. 8" dia.	£14,000
HEALD 171B Sizematic Auto Cycle INTERNAL GRINDER. 1969.	£4,850
VOUMARD 32 ACH INTERNAL With several spindle heads. 3" dia. capacity. 1969.	£6,950
CLICHY 10" x 26" UNIVERSAL Very high quality. FULLY EQUIPPED. 'As new'	£12,500
TSCHUDIN HTG 400 UNIVERSAL (Swiss) INTERNAL Attachment. 1958. 8" x 24" Super quality.	£7,000
MYFORD HA UNIVERSAL INTERNAL Attachment. 1970. 5" x 12". Excellent.	£4,500
MYFORD MG12 Plain Cylindrical Grinder. 5" x 12".	£1,400
JONES & SHIPMAN 1070 Cylindrical Grinder. INTERNAL attachment. 1970. 5" x 12". As new.	£4,000
JONES & SHIPMAN 540AP SURFACE GRINDER. AS NEW. 18" x 6" magnetic chuck. Coolant clarifier. Repeat 'as new'	£4,750
JONES & SHIPMAN 1300 UNIVERSAL INTERNAL Attachment. 1960. 8" x 18"	£3,250
JONES & SHIPMAN 1311 EIT Universal with double swivel wheelslide. Fully equipped. Superb. 1967.	£4,950
JONES & SHIPMAN 1011 27" x 12" SURFACE GRINDER WITH PROJECTORSCOPE. 1964.	£4,950
JONES & SHIPMAN 310 Tool & Cutter Grinder. Very extensive equipment 1965.	£1,950
CINCINNATI No 2 Tool & Cutter Grinder. 1965.	£2,950
CINCINNATI No 1 Tool & Cutter Grinder. 1963.	£1,650
STUDEB PSM 15B PROFILE GRINDER. Several Attachments. 1971.	£3,250
CINCINNATI 20M CENTRELESS. Automatic Infeed. 3 1/2" dia. capacity. 8" face wheel. 1969.	£7,450
MALCUS MC40 CENTRELESS. 3 1/2" diameter capacity 1966.	£4,000
MALCUS MC35 CENTRELESS. 2 3/8" diameter capacity. 1966.	£2,500



**K.E.N.T Machinery & Engineering Co. Ltd.**  
 EUROPA TRADING ESTATE  
 FRASER ROAD, ERITH, KENT  
 Tel: Erith (03224) 46921. Telex: 8951124  
 Contact: *Ken Exeter, Ron Exeter*

**CNC & NC Servicing & Retrofitting**  
 Contact: **DAVID NORRIS**  
 at K.E.N.T. Machinery & Engineering Co. Ltd.  
 or after 6 p.m. on 01-466 5434

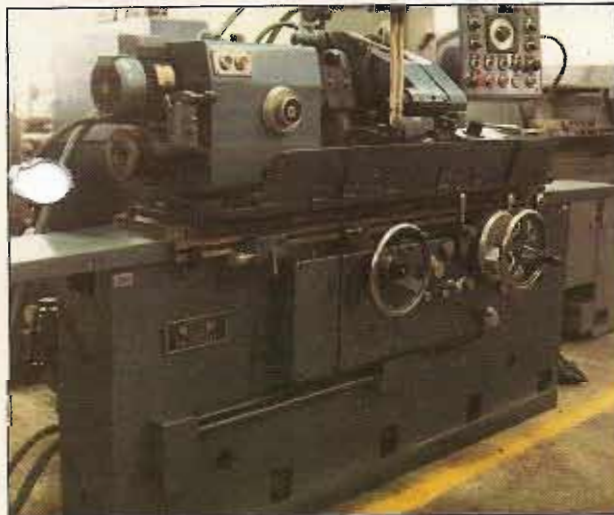
**\*We have just taken into stock De Vlieg 4K-72  
 N.C. JIGMILL. 1974. Fabulous\***



**DIEDESHEIM AM II AUTOMATIC MULTI UNIT MACHINES**



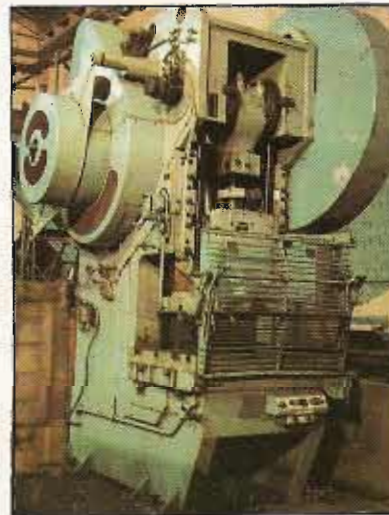
**LOCH TB300 Auto Cycle DEEP HOLE DRILLING MACHINE**



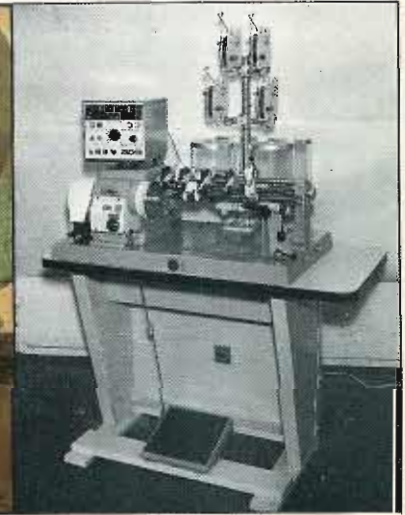
**CLICHY Universal Grinder**



**ACME Auto Cycle MILL**



**RHODES RF 150 Open Fronted Press**



**MODEL CW76**

**THE MACHINE REBUILDING CENTRE  
 K.E.N.T. - VICTOR LTD.**

Europa Trading Estate, Fraser Road, Erith, Kent  
 Tel: Erith (03224) 46921 Telex: 8951124  
 12 miles from Central London

Contact: *Ken Exeter - Group Chairman*

Rebuilders & reconditioners of machines of  
 all types but SPECIALIZING in  
**DIEDESHEIM** Automatic Multi Unit Machines  
**WICKMAN** Multi-spindle Automatics  
**GLEASON** Gearcutting Machines  
**RAILWAY WHEEL LATHES**

**COIL WINDING MACHINES**

**K.E.N.T.-VICTOR** are the manufacturers, sales and  
 service agents of the coil winders previously manu-  
 factured by AVO. The following models available  
 -CW1, CW3, CW6, CW45, CW46, CW66, CW76.

**Also - WAVEWINDERS.**

We are interested in buying your surplus coilwinders.  
 We rebuild coilwinders.  
 We can manufacture coilwinders to your special  
 requirement.

Designed & Printed by CONFEX (SALES) LTD., LONDON. Tel: 01-232 0635

6 or Telex 337682 for details and location

MATRIX No 16 Universal TAP and THREAD GRINDERS	£4,500
CHURCHILL 18x6 horizontal spindle surface grinder with magnetic chuck. 1960.	£1,200
<b>INSPECTION MACHINES</b>	
FERRANTI 3 axis INSPECTION MACHINE. Inch/Metric. Fully equipped. Excellent. Model 75.	£6,500
HAUSER P215 With 4 lens turret. Shadowgraph with excellent workstage & protractor. 'AS NEW'	£2,500
ISDMA M117A Shadowgraphs. 3 lens turret. Micrometer workstage. Fully equipped. Choice of several	£950
DAVID BROWN No 18 INVOLUTE & HELIX MEASURING MACHINE.	£4,950
HOFFMANN Electronic Balancing Machine especially for grinding wheels for worms and rollers	£1,950
VICKERS HARDNESS TESTER. Very little used. Fully equipped.	£750
<b>LATHES</b>	
HARDINGE HLV. H Precision toolroom lathe. 5 1/2" x 18" 3000rpm. Late. Excellent.	£3,450
HARDINGE HLV ditto	£1,850
COLCHESTER MASTER 2500 Gap lathe 13" x 40" — Very late model	£2,750
MISAL (BINNS & BERRY) Model 819 — 20" swing x 10" centres. Excellent. 1975.	£6,250
HARDINGE DV59. Precision lathe. Cabinet base. Full tooling/collets. 1973.	£2,000
COLCHESTER CHIPMASTER 10" swing. Precision lathe. Full tooling. 1970.	£1,000
PROGRESS 1-550 Centre lathe. Gap 550 mm swing x 2000 mm.	£1,950
ELLIOTT Omnitool 15 1/2" swing x 36 centres.	£1,000
LANG Toolroom lathe with TAPER TURNING. 13" diameter x 36" centres. Full tooling. 1960.	£975
Several HOLBROOK, COLCHESTER, D.S.G., HARRISON 6" x 8" x 30" / 48" lathes — VERY REASONABLE	
Several CHURCHILL P5 Multi Cycle Hydraulic Copy Lathes	
GALLICOP 16" x 30" Universal 6 cycle Copy lathe. Full Screwcutting. 1970.	£4,000
<b>MILLING MACHINES</b>	
CINCINNATI 205-12 M1 Universal Toolmakers Overarm. Dividing Head. Excellent. 1964.	£5,750
CINCINNATI 205-12 M1 Vertical. Power down feed to head. Very good. 1962.	£3,950
CINCINNATI 100-122 Powermatic Auto Cycle Horizontal. Impeccable. 24" traverse. 54" x 12". 1970.	£6,950
CINCINNATI 105-122 Powermatic Auto Cycle Horizontal. Power Rise & Fall. 1965.	£8,850
CINCINNATI 207-12 Horizontal Mill. 60" x 12" table. 1485 rpm. 1963.	£2,900
CINCINNATI 3-36 Hypowermatic Auto Cycle Horizontal. 1200 rpm. 52" x 14". 1961.	£1,000
CINCINNATI 1-18 Auto Cycle Horizontal Mills. Several good and late machines.	
KEARNEY & TRECKER 1218 Auto Cycle Horizontal Mills. 42" x 12" 18" traverse. Several 1964.	£1,750
KEARNEY & TRECKER 1224 Auto Cycle Horizontal Mill. Auto rise and fall cycle. 48" x 12". 24" traverse. 1974.	£4,950
KEARNEY & TRECKER 415TF Vertical Mill with Ferranti N.C.	£5,000
BOKO F3 Universal Vertical Boring & Milling Machine. 63" x 48" rotating table. D.R.O. 1964.	£17,000
FRITZ WERNER FV3 Vertical Mill. 63" x 14". 1800 rpm. Excellent. 1963.	£3,250
LAGUN Universal Mill. 63" x 14" 50 taper. Vertical head. 1965.	£2,950
ARNO Universal Mill. 42" x 10". Fitted Universal Milling head. 1967.	£2,450
DUFOR No 51 Universal Mill with Vertical Attachment. 42" x 10".	£1,950
CENTEC Mk III Auto Cycle Mill. 1970.	£750
MAHO MH800 Universal Tool & Die Mill with Tilt/Swivel table. 1963.	£4,000
ACME AIKARTU FH4 Auto Cycle Horizontal Mill with HYDRAULIC COPYING (Diplomatic) and auto cycle rise and fall to headstock. Table 45" x 10". Cost £17,000 plus in 1979. Perfect.	£6,950
We generally have several low priced horizontal universal and vertical mills in stock. Please enquire if you require such a machine.	
GIDDINGS & LEWIS MC ENDOMATIC Double ended Centring and Facing Machine. 36" centres. Twin vices. 10 h.p. each. Milling head. 3 h.p. each centring head. New 1968. Fully reconditioned with 12 months guarantee.	£14,750
<b>NUMERICAL CONTROL</b>	
(all machines can be viewed under power. We can retrofit new systems if required) Send for full details.	
HERBERT DE Vlieg 4K-72 N.C. Jig Mill. Datatrol Mk III N.C. 1974. Full details on request. EXCEPTIONAL OPPORTUNITY ***	
CINCINNATI 4H-1500 Horizontal Machining Centre. Accramatic 330 NC 1970. Ex Cincinnati factory.	£12,500
CINCINNATI 3H-1000 Horizontal Machining Centre. Accramatic 8 NC 1972.	£8,500
MOOG MC1000 Hydrapoint VERTICAL MACHINING CENTRES with 24 station Auto Tool Changers.	1971 — £6,250 1975 — £9,650
HERBERT BATCHMATIC 50 N.C. lathe with barfeed. 1970.	£4,000
VERO N.C. TURRET DRILLS with Milling feeds. With AIRMEC AUTOSEI N410 N.C. 1968.	£4,000
VERO 20/40 L1000 Vertical Machining Centre.	£6,500
NEWALL BURGMASER 25CHT 8 station heavy duty N.C. TURRET DRILL with Plessey PTL 100 N.C.	£6,500
<b>REMEMBER — WE SERVICE N.C. as well as selling it.</b>	
<b>PRESSES and SHEET METAL MACHINES</b>	
RHODES RF150 ton Geared Open fronted Press. 1'—6" stroke. Cushion. Superb. 1969.	£12,000
RHODES RF100 ton Geared Open fronted Press. 1'—6" stroke. Udal guards. Superb. 1969.	£9,000
H.M.E. C28 Double Column 200 ton Press. 8" stroke. Cushion. Superb. 1967.	£6,500
RHODES RF75 Open fronted, inclinable, VARIABLE STROKE PRESS. Udal guards. Excellent. 1970.	£7,750
RHODES RF55 Open fronted, inclinable, VARIABLE STROKE, Guarded. Hardly used. AS NEW. 1978.	£5,500
ETCHELLS MF12/75 MULTIFORGE Horizontal Forging Machine. 7.5 ton gripping and upsetting power. 1" nominal diameter capacity. 120 r.p.m. Surveyed by manufacture — in excellent condition.	£18,000
H.M.E. DCP5 150 ton Double Column Press. Variable stroke. Excellent.	£12,000
MILLS 60 ton and 30 ton 'OILAUIC' Hydraulic Presses.	POA
DANSK KAH100 Open fronted 100 ton Power Press with Variable Stroke. Rollfeed. Air cushion. (Similar HME OP100). Excellent.	£6,750
BLISS 23 Inclinable open fronted 75 ton press. 2-5" stroke. Geared. 1959.	£3,500
NORTON No 6 Double Sided Flypress. Very little used.	£250
MORGAN/BHP CUT TO LENGTH LINE with Auto Stackers. 610 mm x 1.6 mm.	£2,500
SCHULER PKNR 250 ton KNUCKLE PRESS. Table 340 mm x 470 mm. 1971.	£9,000
CINCINNATI Series 5 Press Brake. 135 ton x 10 ft. AUTO CYCLE Superb. 1967.	£16,500
CINCINNATI 1410 AUTO CYCLE Guillotine Shears. 10" x 3/16". Superb. 1968.	£14,000
<b>VARIOUS (Including FORK TRUCKS)</b>	
JONES & SHIPMAN MICROMATIC Model 738 Production Vertical HONER. Good.	£750
DELAPENA HHMIA Horizontal Honer. Large range of honers.	£300
TRANSCO AUDREMA 8032/D Two Spindle Chucking Auto. used for form turning on COLD HEADED items. 1979.	£12,000
CRIDAN FT80 THREADING & PROFILE COPY LATHE. 80 mm bore. 1,500 mm between centres. 800 mm swing. 1963.	£5,000
APOLLO WINTER type T CIRCULAR SAW. High precision cutting. Vice 400 mm x 250 mm. Blades 250/300/325 mm. As new.	£1,200
YALE FORK TRUCK K51AT80-83 — 8000 lbs. JIB ATTACHMENT. With Charger.	£1,600
LANSING BAGNALL FORK TRUCK. FOEP112520DLTM. PEDESTRIAN OPERATED. 21300 lbs. Battery charger. Superb.	£1,350
VOLKSWAGEN DROPSIDES TRUCK. 2000 cc. 3 tons capacity. Dec. 1979.	POA
GREENBROOK 1270/TP 50 inch HORIZONTAL BROACH. UNUSED.	£1,500
BSA TM7 VERTICAL Internal Broach. 6 tons pull. Universal.	£1,400

Please return coupon to

**EXETER MACHINE TOOLS  
(MIDLANDS) LTD.**

Wyrley Road, Aston  
BIRMINGHAM B6

having ticked appropriate boxes

**\*DON'T FORGET  
CONTACT US IF YOU HAVE  
MACHINE TOOLS FOR SALE\***

My name \_\_\_\_\_ Position \_\_\_\_\_

Company \_\_\_\_\_

Address \_\_\_\_\_

Please send me details of:-

K.E.N.T. - VICTOR Coilwinders

C.N.C. & N.C. Servicing & Retrofitting

K.E.N.T. - VICTOR machine rebuilding

Put our company on your used machine  
tool mailing list